

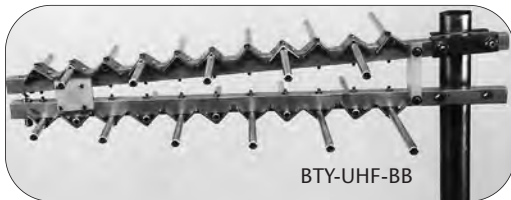
High Definition Ready!

BTY Series

Single Channel VHF/UHF Antennas

○ Features & Benefits

- High Gain, Low Sidelobes
- BTY-UHF-BB Joins With BTY-LP-BB For a Combined U/V Antenna
- HDTV Compatible
- Rear Mount Simplifies Tower Mounting



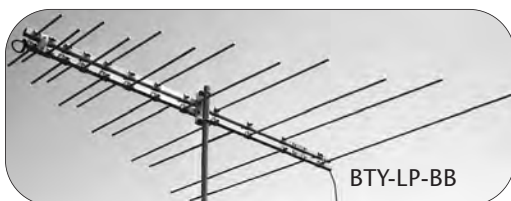
○ Features & Benefits

- Full 88-108 MHz Coverage
- 360 Degree Beamwidth



○ Features & Benefits

- High Gain, Low Sidelobes
- Foam-Filled Elements Dampen Vibration
- Cantilever Mounts Available
- Joins With BTY-UHF-BB For Complete VHF/UHF Antenna

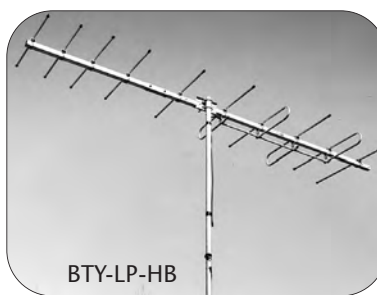
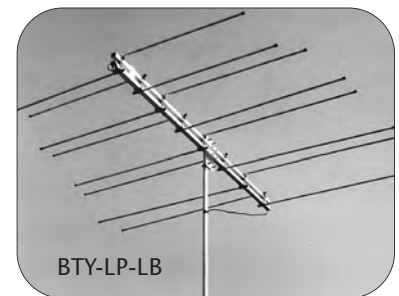
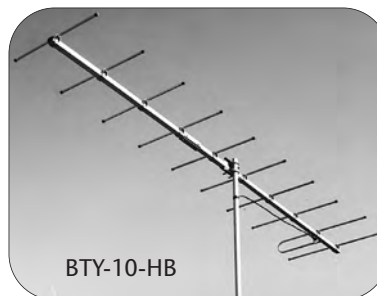


The BTY Series of professional quality antennas include single channel and broadband models designed for a variety of UHF and VHF applications. The BTY Series features high gain, narrow beamwidth, and low side lobes.

All models can be shipped via UPS to reduce freight and handling costs. Square boom construction and end-sealed aluminum elements provide added strength, excellent wind resistance and exceptional weathering properties. On VHF models, the heavy duty mounting bracket is positioned at the antenna's center of gravity for balanced mounting to the mast. An optional cantilever mounting bracket (Stock No. 5760) is required for VHF antenna end mount installations. This optional mount permits attaching the VHF antenna to either a horizontal or vertical tower member. All UHF models are designed for end mounting due to their smaller physical size. The BTY Series Antennas can accommodate a maximum mast size of 2.5" O.D.(outside diameter). All models are 75 Ohm impedance with an "F" connector.

○ Features & Benefits

- High Gain, Low Sidelobes
- Foam-Filled Elements Dampen Vibration
- Cantilever Mounts Available



Order From:



Toll Free: 800-423-2594

www.multicominc.com

multicom@multicominc.com

BTY Series

Single Channel VHF/UHF Antennas

○ Specifications

VHF Single Channel

Model: BTY-5-LB BTY-10-HB

| Channel: | 2 | 3 | 4 | 5 | 6 | FM | 7 | 8 | 9 | 10 | 11 | 12 | 13 |
|---|--|-------|-------|-------|-------|-------|-------|-------|-------|------|------|------|-------|
| Bandwidth (MHz): | 8 | 8 | 8 | 8 | 8 | 23 | 8 | 8 | 8 | 8 | 8 | 8 | 8 |
| Gain (dBi): | 9.2 | 9.2 | 9.2 | 9.2 | 9.2 | 9.2 | 13.2 | 13.2 | 13.2 | 13.2 | 13.2 | 13.2 | 13.2 |
| 3 dB Beamwidth Horizontal (Degrees): | 63 | 63 | 63 | 63 | 63 | 63 | 51 | 51 | 51 | 51 | 51 | 51 | 51 |
| Front to Back Ratio (dB): | 17 | 17 | 17 | 17 | 17 | 17 | 17 | 17 | 17 | 17 | 17 | 17 | 17 |
| Return Loss (dB): | 12 | 12 | 12 | 12 | 12 | 12 | 17 | 17 | 17 | 17 | 17 | 17 | 17 |
| Impedance: | 75 Ohms | | | | | | | | | | | | |
| Connector: | F Connector | | | | | | | | | | | | |
| Number of Elements: | 5 | 5 | 5 | 5 | 5 | 6 | 10 | 10 | 10 | 10 | 10 | 10 | 10 |
| Boom Length (Inches): | 128 | 116 | 105 | 96 | 96 | 120 | 131 | 126 | 122 | 118 | 115 | 110 | 106 |
| Max Element Width (Inches): | 106 | 97 | 85 | 75 | 71 | 64 | 33 | 32 | 32 | 31 | 31 | 29 | 28 |
| Boom Material: | 6063-T6 Alum. Tube 1.25" square, 0.062" wall | | | | | | | | | | | | |
| Element Material: | 6063-T52 Alum. Tube 0.5" round, 0.049" wall | | | | | | | | | | | | |
| Max Cross Sectional Area (sq. ft.): | 1.56 | 1.45 | 1.35 | 1.28 | 1.2 | 1.45 | 1.48 | 1.43 | 1.4 | 1.35 | 1.33 | 1.28 | 1.25 |
| Wind Resistance @ 100 MPH (No Ice in lbs.): | 49.84 | 45.67 | 41.85 | 38.73 | 38.73 | 47.06 | 52.56 | 50.83 | 49.44 | 48 | 47 | 45 | 43.88 |
| Antenna Weight (lbs.): | 10.2 | 9.89 | 9.36 | 8.86 | 8.61 | 9.61 | 9.61 | 9.49 | 9.37 | 8.86 | 8.99 | 8.74 | 8.61 |
| Maximum Shipping Weight (lbs.): | 13.25 | | | | | | | | | | | | |

VHF

Model:

| Band | BTY-LP-LB LB | BTY-HB-HP HB | BTY-LP-BB BB | BTY-2-FM FM |
|---|--|-----------------|-----------------|----------------|
| Channel: | 2 to 6 | 7 to 13 | 2 to 13 | FM |
| Bandwidth (MHz): | 55-88 | 174-216 | 54-88; 174-216 | 88-108 |
| Gain (dBi): | 9 | 12.2 | 8.2 | 2.2 |
| 3 dB Beamwidth Horizontal (Degrees): | 57 | 50.5 | 70 | 360 |
| Front to Back Ratio (dB): | 22 | 20 | 18 | N/A |
| Return Loss (dB): | 14 | 12 | 12 | 12 |
| Impedance: | 75 Ohms | | | |
| Connector: | F Connector | | | |
| Number of Elements: | 8 | 10 | 12 | 2 |
| Boom Length (Inches): | 86 | 104 | 96.4 | 18 |
| Max Element Width (Inches): | 109.13 | 35.5 | 114.13 | 59 |
| Boom Material: | 6063-T6 Alum. Tube 1.25" square, 0.062" wall | | | |
| Element Material: | 6063-T52 Alum. Tube 0.5" round, 0.049" wall | | | |
| Max Cross Sectional Area (sq. ft.): | 1.9 | 1.3 | 2 | 0.463 |
| Wind Resistance @ 100 MPH (No Ice in lbs.): | 76.2 | 52 | 80 | - |
| Shipping Weight (lbs.): | 15.25 | 13.25 | 17.75 | 3 |

Order From:



Toll Free: 800-423-2594
www.multicominc.com
multicom@multicominc.com

BTY Series

Single Channel VHF/UHF Antennas

○ Specifications

| UHF Model: Band Channel: | BTY-10-U | | | | | | BTY-UHF-BB UHF 14 to 69 |
|---|--|--------------|--------------|--------------|--------------|--------------|-------------------------------|
| | A (14-19) | B (20-26) | C (27-34) | D (35-44) | E (45-56) | F (57-69) | |
| Bandwidth (MHz): | 470-506 | 506-548 | 548-596 | 596-656 | 656-728 | 728-806 | 470-890 |
| Gain dBi: | 12.2 | 14.2 | 13.2 | 12.2 | 12.2 | 12.2 | 10.2 |
| 3 dB Beamwidth (horizontal) Degrees: | 46 | 46 | 46 | 46 | 46 | 46 | 62 |
| Front to Back Ratio (dB): | 21 | 16 | 19 | 20 | 18 | 14 | 18 |
| Return Loss: | 18 | 16 | 18 | 16 | 15 | 14 | 12 |
| Impedance: | 75 Ohms | | | | | | |
| Connector: | F Connector | | | | | | |
| Number of Elements: | 10 | 10 | 10 | 10 | 10 | 10 | 11 |
| Boom Length (Inches): | 48.58 | 48 | 44.06 | 42.94 | 39 | 37.88 | 24 |
| Max Element Width (Inches): | 12.88 | 12.44 | 11 | 10.5 | 10 | 9.13 | 13 |
| Boom Material: | 6063-T6 Alum. Tube 0.75" Square, 0.062" Wall | | | | | | |
| Element Material: | 6063-T52 Alum. Tube 0.375" Round, 0.049" Wall (Dipole .5" Round, 0.049 Wall) | | | | | | |
| Max Cross Sectional Area (sq. ft.): | 0.468 | 0.468 | 0.468 | 0.468 | 0.468 | 0.468 | 0.341 |
| Wind Resistance @ 100 MPH (No Ice in lbs.): | 16.52 | 16.52 | 16.52 | 16.52 | 16.52 | 16.52 | 13.6 |
| Shipping Weight (lbs.): | 4.25 | 4.25 | 4.25 | 4.25 | 4.25 | 4.25 | 5.38 |

○ Ordering Information

| Model | Stock No. | Description |
|------------|-----------|---|
| BTY-5-LB | 4866-xx | Antenna Single Channel Low-Band VHF/FM, 5 Elements, 54-88/88-108MHz |
| BTY-10-HB | 4867-xx | Antenna Single Channel High-Band VHF, 10 Elements, 174-216MHz |
| BTY-LP-HB | 4871 | Antenna Broadband High-Band VHF, 10 Elements, 174-216MHz |
| BTY-LP-LB | 4872 | Antenna Broadband Low-Band VHF, 8 Elements, 55-88MHz |
| BTY-10-U | 4873-xx | Antenna Single Channel UHF, 10 Elements, 470-806MHz |
| BTY-LP-BB | 4874 | Antenna Broadband VHF, 12 Elements, 54-88/174-216MHz |
| BTY-UHF-BB | 4875 | Antenna Broadband UHF Antenna, 11 Elements, 470-890MHz |
| BTY-2-FM | 4878 | Antenna Omnidirectional FM, 2 Elements, 88-108MHz |

xx - Specify channel when ordering

Order From:



Toll Free: 800-423-2594
www.multicominc.com
multicom@multicominc.com