



WINCH LINE BLOWER

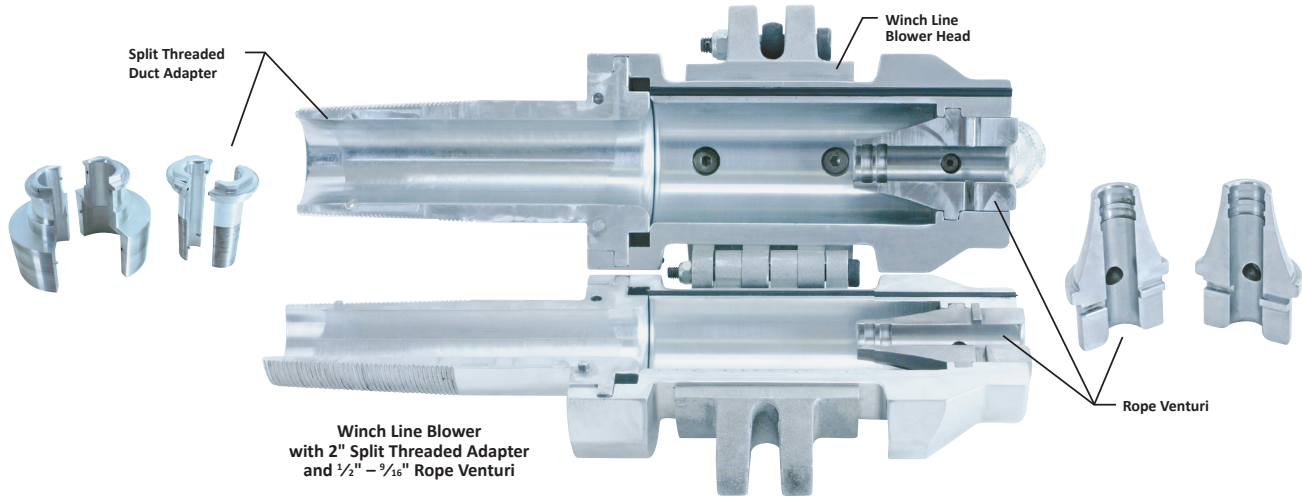


The Condux Winch Line Blower

The Condux Winch Line Blower is a tool for installing winch line, rope or pull tape into conduit. It turns the job of placing winch line into one easy step, eliminating the need to blow a string and pull back a rope.

Using compressed air, 90 psi (6.2 bar) and 100 cfm (2.8 cmm), the winch line blower can propel steel winch line, rope or tape in conduit from 1" to 6" in diameter.

Installation is easy. No special tools are required.



Winch Line Blower with 2" Split Threaded Adapter and 1/2" - 9/16" Rope Venturi

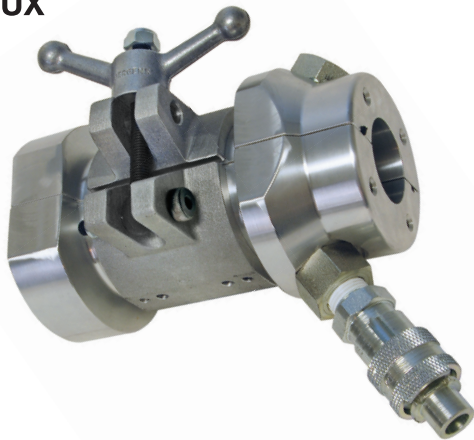
Split Threaded Adapter Part No.	Duct Size (in)	(Duct I.D. Range)	Rope Venturi			Conduit Carrier
			1/4" - 3/8" (6 mm - 10 mm)	1/2" - 9/16" (12.7 mm - 14 mm)	7/8" (22 mm)	
08201108	.75	0.83" - .93" (21 mm - 24 mm)	08201089	08201086	08201090	Call Factory
08201110	1	0.90" - 1.13" (23 mm - 29 mm)	08201089	08201086	08201090	Call Factory
08201112	1.25	1.25" - 1.40" (32 mm - 36 mm)	08201089	08201086	08201090	Call Factory
08201115	1.5	1.40" - 1.65" (36 mm - 42 mm)	08201089	08201086	08201090	Call Factory
08201020	2	1.91" - 2.10" (49 mm - 53 mm)	08201089	08201086	08201090	08202020
08201025	2.5	2.29" - 2.47" (58 mm - 63 mm)	08201089	08201086	08201090	08202520
08201030	3	2.83" - 3.10" (72 mm - 78 mm)	08201089	08201086	08201090	08202920
08201035	3.5	3.25" - 3.60" (83 mm - 91 mm)	08201089	08201086	08201090	08203020
08201041	4	3.80" - 4.06" (97 mm - 103 mm)	08201089	08201086	08201090	08203920
08201045	4.5	4.20" - 4.70" (107 mm - 119 mm)	08201089	08201086	08201090	08204020
08201051	5	4.71" - 5.08" (120 mm - 129 mm)	08201089	08201086	08201090	08204920
08201061	6	5.61" - 6.10" (142 mm - 155 mm)	08201089	08201086	08201090	08205920



WINCH LINE BLOWER



FISHING & RODDING



PULLING TAPE INSTALLATION AS AN OVERLAY



Change the Rope Plug on the Winchline Body to the Rope Adapter.



Thread pulling tape through the Rope Adapter.

WINCH LINE & ROPE INSTALLATION



Attach winch line or rope to carrier.



Attach cable chute line carrier to Pull Tape.



Install carrier into duct.



Install cable chute line carrier into duct.



Close adapter around the winch line or rope. Install into duct.



Close adapter around the pulling tape and existing cable. Install into duct.



Install Winch Line Body and tighten the clamp.

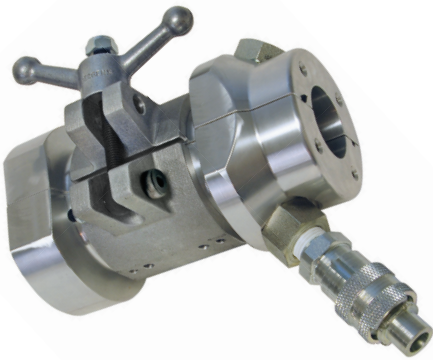


Attach body to the adapter. Close and tighten, running existing cable out of the back.



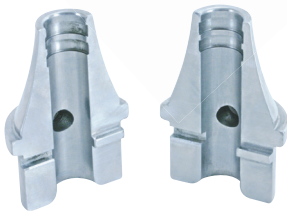


WINCH LINE BLOWER



Winch Line Body

Part No.	Description
08201080	Winch Line Body Assembly 2" - 6" (body includes 1/2" - 9/16" venturi set)



Venturis

Part No.	Description
08201089	Venturi, Winch Line 1/4" - 3/8" set
08201086*	Venturi, Winch Line 1/2" - 9/16" set
08201090	Venturi, Winch Line 7/8" set

* Comes standard with Winch Line Body



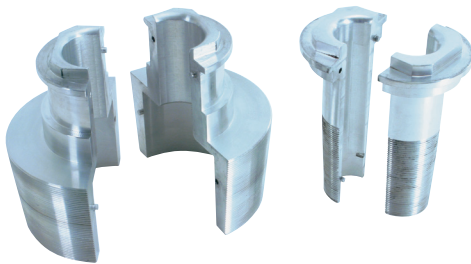
Plug

Part No.	Description
08780223	Venturi Plug (Used to seal off back of Winch Line Blower to blow in pull tape or pea line)



Hose & Valve

Part No.	Description
08201015	Hose Valve Assembly



Adapters

Part No.	Description
08201108	Winch Line Duct Adapter .75"
08201110	Winch Line Duct Adapter 1"
08201112	Winch Line Duct Adapter 1.25"
08201115	Winch Line Duct Adapter 1.5"
08201020	Winch Line Duct Adapter 2"
08201025	Winch Line Duct Adapter 2.5"
08201030	Winch Line Duct Adapter 3"
08201035	Winch Line Duct Adapter 3.5"
08201041	Winch Line Duct Adapter 4"
08201045	Winch Line Duct Adapter 4.5"
08201051	Winch Line Duct Adapter 5"
08201061	Winch Line Duct Adapter 6"

! Not for use in steel conduit.

See ranges on page 26.



WINCH LINE BLOWER



FISHING & RODDING

Carriers

Part Number	Description	Carrier OD
08202020	Carrier, Winch Line 2" SCH40&80, TC6	2.05" (53 mm)
08202520	Carrier, Winch Line 2.5" SCH40&80	2.50" (64 mm)
08202920	Carrier, Winch Line 3" SCH 40&80	3.13" (80 mm)
08203020	Carrier, Winch Line 3" SCH40, TC6&8	3.50" (89 mm)
08203420	Carrier, Winch Line 3.5" SCH 40&80	3.75" (95 mm)
08203520	Carrier, Winch Line 3.5" TC6&8	4.00" (102 mm)
08203920	Carrier, Winch Line 4" SCH40&80, TEL	4.25" (108 mm)
08204020	Carrier, Winch Line 4" SCH40,TEL	4.50" (114 mm)
08204920	Carrier, Winch Line 5" SCH 40&80	5.25" (133 mm)
08205020	Carrier, Winch Line 5" SCH40, TC6&8	5.50" (140 mm)
08205920	Carrier, Winch Line 6" SCH 40&80	6.25" (159 mm)
08206020	Carrier, Winch Line 6" SCH40, TC6&8	6.50" (165 mm)



! Not for use in steel conduit.

Alternate carrier options available on pages 24-25. See: Line Carriers, Cable Chute Line Carriers and Duct Projectiles.

Rope Adapter

Rope Adapter
08201091



Storage Case

Storage Case
08201093

