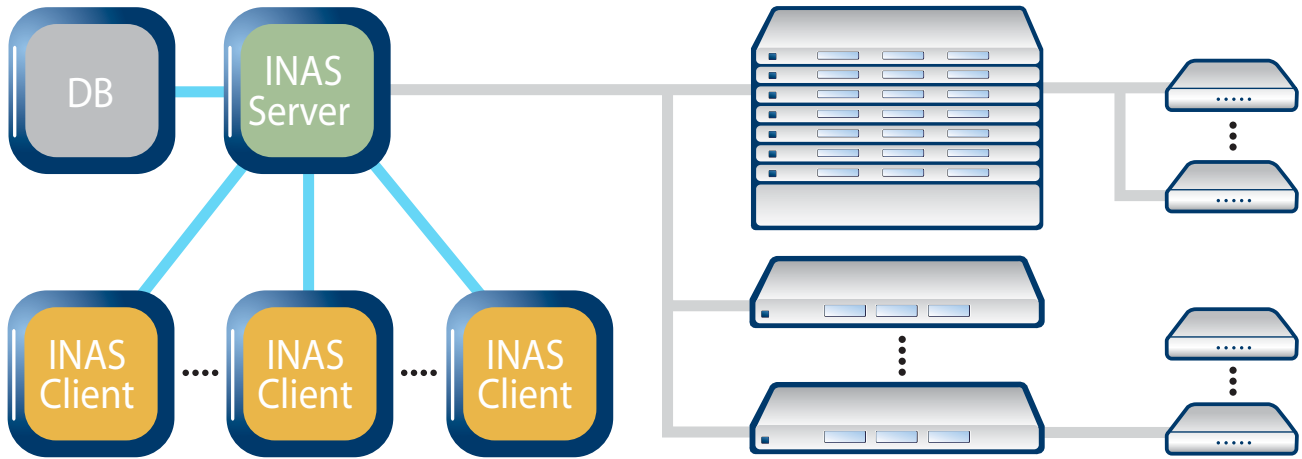


Element Management System (EMS)

with Network Management capabilities



Access to INAS Server through INAS Client

Dasan's Integrated Network Administrator System (INAS) Element Management System (EMS) is a comprehensive network management system featuring an intuitive graphical user interface. Service providers can deploy and provision equipment quickly and easily as well as optimize network usage, thus reducing operating costs.

The INAS EMS is designed to meet the demanding requirements of large operators while delivering the same benefits to mid-size and smaller services providers. Dasan's EMS allows you to discover and control your network, provision and activate

services, as well as diagnose and solve key issues. It provides subscribers with progressive service levels, value-adding premium services such as Virtual LANs and intuitive auto-provisioning capabilities, and robust policy settings.

Using IP-based management for real-time network discovery, the EMS detects network failovers, and helps providers monitor and maintain a stable network environment. It also provides the real-time fault management and configuration for all SNMP available nodes, and displays the port/slot and power level statuses.

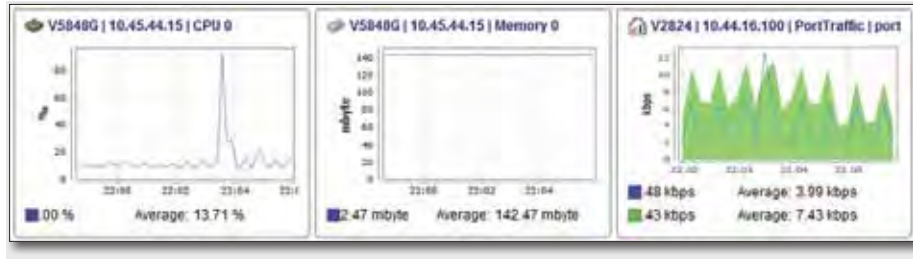
Main Capabilities

Network Management | Easily create, modify or delete network groups and nodes

	Display Name	Host Name	IP Address	Model Ty
	NETOOL	NETOOL	10.44.16.1	Unknown M
	V2824	V2824	10.44.16.100	V2824
	V8240	V8240	10.44.16.103	V8240
	V5848G	V5848G	10.44.16.105	V5848G
	V5812G	V5812G	10.44.16.108	V5812G
	V1916GR	V1916GR	10.44.16.109	V1916GR



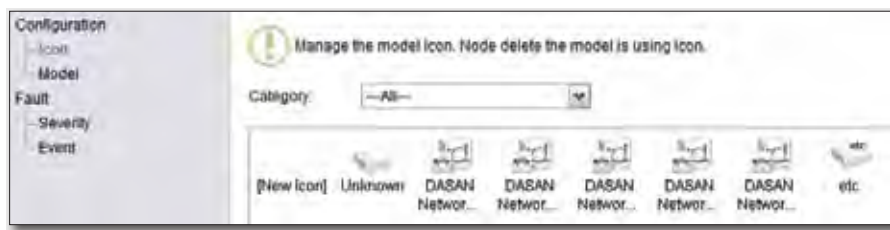
Performance Monitoring | Monitor CPU, memory and traffic performance for registered nodes



Event & Log Check | Access events that occur on nodes and easily retrieve logs

Severity	Occurrence	Acknowledged	Cleared	Event	Category	IP Address	Node	Model	Group	Message
Warning	2012-03-1...			portDown	Polling	10.44.16.109	V1916GR	V1916GR	DASAN Net...	Port 19(FX-...
Warning	2012-03-1...			fanFail	Polling	10.44.16.103	V8240	V8240	DASAN Net...	Fan 1 faile...
Warning	2012-03-1...			portDown	Polling	10.44.16.100	V2824	V2824	DASAN Net...	Port 2(TX-1...
Warning	2012-03-1...			gponOflLo...	Polling	10.44.16.103	V8240	V8240	DASAN Net...	OLT(5/1) Al...
Warning	2012-03-1...			cpuOverLo...	Polling	10.44.16.109	V1916GR	V1916GR	DASAN Net...	CPU load(...

Configuration Tool | Advanced system settings configuration



Equipment Configuration | Equipment settings and management for registered nodes

The screenshot displays the Equipment Configuration interface for node V8240 (10.44.16.103). The left sidebar shows a tree view with categories like System Management, Base Information, System Configuration, Time Setting, Login Information, DNS Server, Process, SSH Remote, Hardware Information, SFP, OMI, Slot, Upgrade, Management, Bridge, DHCP, Multicast, QOS, Security, GPON, CLT, and ONU.

The main panel shows the following information:

- Information:** Model Name: V1916GR, Serial Number: N/A, Hardware Version: DS-B7-442-A1, Bootloader Version: 01.13.0007, SW Compatibility: 4, 3, OS Version: 2.09, MAC Address: 00XXXXXXXX31.
- Memory:** All Memory(KB): 221,092, Free Memory(KB): 143,248, Shared Memory(KB): 0, Buffers Memory(KB): 0, Cached Memory(KB): 37,320, All Swap Memory(KB): 0, Swap Free Memory(KB): 0.
- Flash:** Flash Total Size(Byte): 176,111,618, Flash OS Size(Byte): 58,220,256, Flash config Size(Byte): 117,391,360, Flash OS Used Size(Byte): 18,457,022, Flash Config Used Size(Byte): 520,192.

At the bottom, there is a physical port diagram for the V5812G node, showing MGMT, LNK, and ACT LEDs, and various ports including GPON4, L/A 1G, and RX/TX Console.

Purchase from: www.multicominc.com 800-423-2594 407-331-7779