



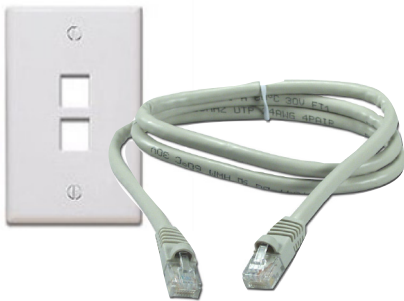
Cat5E & Cat6 Data Communications Cable

Cat5E - Key Features

- Category-5E Unshielded Twisted Pair (UTP) Cable
- High-Performance Data Communications Cable
- Suitable for High-Speed Phone, Data & Broadband Applications
- Suitable for Gigabit Ethernet, Fast Ethernet and TP-PMD/CDDI
- 4-Pair – Easily Identified Color-Striped Pairs
- AWG24 Solid Annealed Bare Copper Conductors
- Excellent Attenuation and Crosstalk Characteristics
- Suitable for Indoor Installations
- Exceeds EIA/TIA 568, UL, CSA and ISO/IEC 11801 specifications
- UL/cUL or ETL Listed
- Supplied in 1000' Pull Box
- Available in Grey, Blue, White, Red and Yellow

Cat6 - Key Features

- Category-6 Unshielded Twisted Pair (UTP) Cable
 - Ultra-High-Performance Data Communications Cable
 - Easily Identified Color-Striped Pairs
 - PE pair separator minimizes pair motion
 - AWG23 Solid Annealed Copper Conductors
 - 100% Tested Wiring Sequence and Continuity
 - Excellent Attenuation and Crosstalk Characteristics
 - Suitable for Indoor Installations
 - UL/cUL 1685, CSA, ETL Listed
 - Supplied in 1000' Pull Box
 - Available in Grey, Blue, White, Red, Yellow
- Suitable for Critical High-Speed Applications Network Applications, including:
- Gigabit Ethernet
 - Fast Ethernet
 - Broadband Audio and Video
 - TP-PMD/CDD
- Exceeds EIA/TIA 568, UL, CSA and ISO/IEC11801 specifications



Jumpers and Wall Plates and other accessories are also available



Part#: CAT5E-(color) CAT6-(color)

www.multicominc.com

Multicom, Inc.
Ph: 800-423-2594
Fax: 407-339-0204

Email: multicom@multicominc.com