



FTTH Terminal Box

Product Specifications

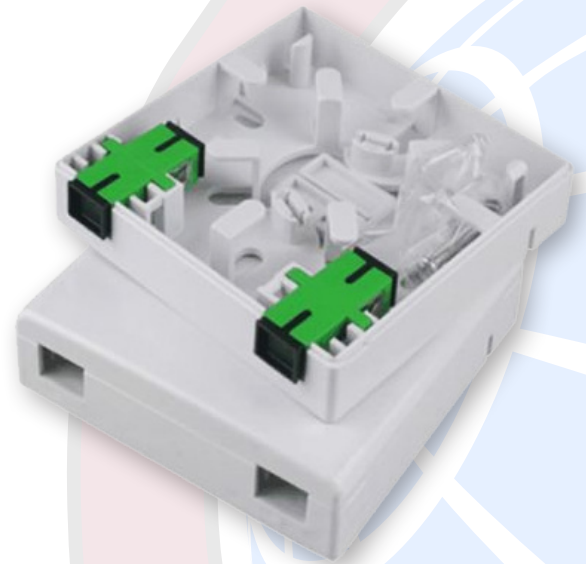
Description

Multicom's two-port, wall mount, M-FTERM Fiber Optic FTTH Terminal Box is used for the distribution and terminal connection of various types of optical fiber systems. It is suitable for mini-network terminal distribution, in which the optical cables - patch cords or pigtails are connected. The FTTH Terminal Box includes two SC/APC Adapters and mounting hardware.

Features

- Compact two-port functionality
- Easily mounts to the wall with included mounting hardware
- Strong ABS housing protects the internal connections
- Internal structure keeps fiber cable organized
- Bottom cable access holes for easy entry

Parameter	Specification
Material	ABS
Ports	2
# of Adapters	2, Suitable for SC/UPC and/or SC/APC
Size (mm)	86 x 86 x 23 (3.4 x 3.4 x 0.9 in)
Color	White



M-FTERM-B-W/P-2B-SC/APC-HC

www.multicominc.com

Multicom, Inc.
Ph: 800-423-2594 / 407-331-7779

Fax: 407-339-0204

Email: multicom@multicominc.com