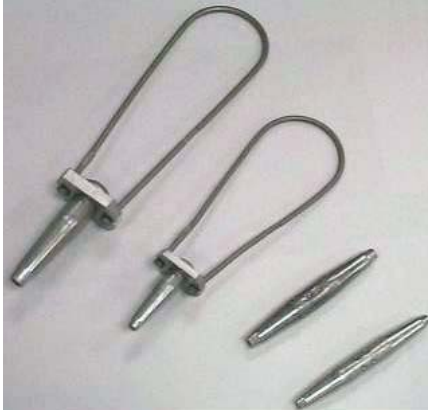




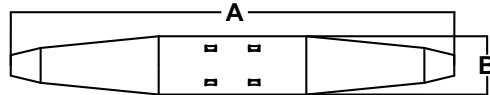
Wirelink® and Wirevise®



Wirelinks® and Wirevises® are used to splice/deadend galvanized steel messenger mid-span of a service drop.

Features

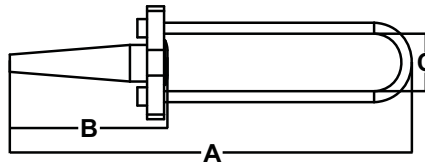
- Minimum holding strength is 90% RBS of wire specified
- Designed to support both ends of self supporting multi-pair drop wire that uses a solid galvanized steel messenger wire that is integrated into the jacket in a figure 8 configuration



Wirelink®

Catalog Number	A	B	Wire Range	
			In	Mm
5057 5057N	2.94	0.39	.062-.100 16 USSWG 15 USSWG 14 USSWG 13 USSWG	1.40-2.60 16 BWG 15 BWG 14 BWG 13 BWG
5059 5059N	2.94	0.43	.091-.114 13 USSWG 12 USSWG	2.30-2.90 13 BWG 12 BWG
5063 5063N	4.06	0.55	.120-.135 11 USSWG 10 USSWG	3.10-3.50 11 BWG 10 BWG
5039	9.00	1.03	.140-.215 9 USSWG 8 USSWG 7 USSWG 6 USSWG 5 USSWG	3.70-5.50 9 BWG 8 BWG 7 BWG 6 BWG

Notes:
N = polyolefin covered Wirelink®



Wirevise®

Catalog Number	A	B	C	Wire Range	
				In	Mm
5056	5.50	1.55	1.60	.062-.100 16 USSWG 15 USSWG 14 USSWG 13 USSWG	1.40-2.60 16 BWG 15 BWG 14 BWG 13 BWG
5058	5.50	1.47	1.60	.091-.114 13 USSWG 12 USSWG	2.30-2.90 13 BWG 12 BWG
5062	7.70	2.46	1.50	.120-.135 11 USSWG 10 USSWG	3.10-3.50 11 BWG 10 BWG
5199	10.20	4.66	1.60	.140-.215 9 USSWG 8 USSWG 7 USSWG 6 USSWG 5 USSWG	3.70-5.50 9 BWG 8 BWG 7 BWG 6 BWG

Notes:
5056 available in .083 range only as 5056T