

GRB-HRL

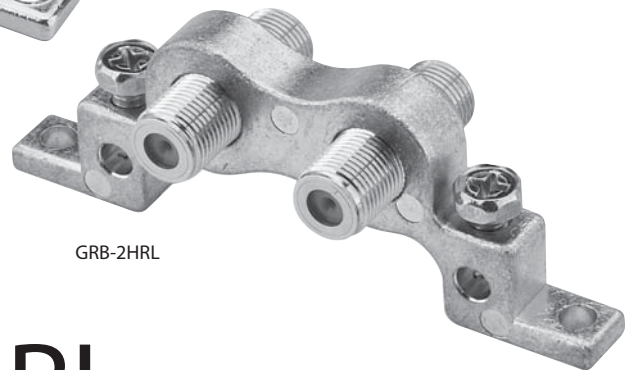
Series

3GHz High Performance Grounding Blocks

TRUSPEC™
A PICO MACOM REGISTERED TRADEMARK



GRB-1HRL



GRB-2HRL

GRB-HRL

Series

3GHz High Performance Grounding Blocks

Manufactured to exacting engineering standards, TruSpec's GRB-HRL-Series high-performance F-Ground Blocks are designed to exceed the most stringent CATV and Satellite requirements of today and tomorrow. These single and dual path ground blocks feature excellent conductivity, allowing a low resistive path for shield current dissipation. Embedded TruSpec F-81HRL brass splices guarantee unsurpassed insertion loss and return loss performance beyond 3GHz, thus ensuring the highest quality analog or digital signal transfer. F-port threads are precision machined, ensuring easy connector installation and removal, and improved connector interface. Small aperture flat-ended ports maximize surface contact and provide an effective barrier against moisture migration. High retention 24K gold plated 360° round seizing pins maximize center-conductor surface contact to significantly reduce insertion loss micro reflections. The grounding blocks' connector splices feature a thick nickel coating over high-grade CDA360 brass to ensure excellent corrosion resistance. In addition, the blue-zinc-coated cast zinc housing ensures a long service-free service life against environmental degradation. Each GRB-HRL-series ground block is fully tested at the factory to comply with SCTE's and TruSpec's stringent standards.

- Embedded TruSpec F-81HRL splices for superb digital-ready broadband performance to 3GHz
- Gold-plated beryllium-copper 360° round seizing pins maximize center conductor surface contact thereby significantly reducing contact resistance
- Retention force >150 grams typical even after repeated insertions of larger-diameter center conductors
- Reduced aperture flat-ended ports on both ends comply to SCTE/ANSI IPS-SP-407 standard to maximize connector-shield to connector-surface-contact and reduce moisture migration
- Impressive return-loss over -30dB up to 3GHz significantly exceeds SCTE return loss standard
- Less than 0.20dB insertion loss typical to 3GHz provides unsurpassed performance in digital environments
- Nickel-plated high-grade CDA360 brass F81 splices
- Blue-zinc-coated zinc-alloy housing ensures long corrosion-free service life against environmental degradation
- 1-inch overall length F splices with precision machined 3/8" 32UNEF threads ensure secure splice-to-connector interface for maximum connectivity
- High 8-Ampere DC continuous current handling capacity
- Mounting tabs with convenient 3-way mounting screws (Slotted, Hex, Phillips) enables easy and cost-effective installations
- GRB-2HRL dual-ground block provides dual ground-wire connection

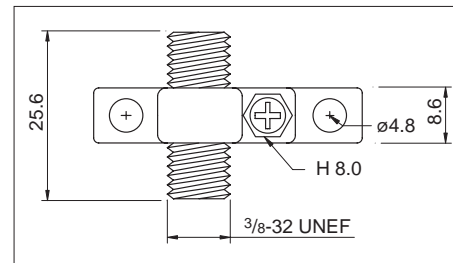
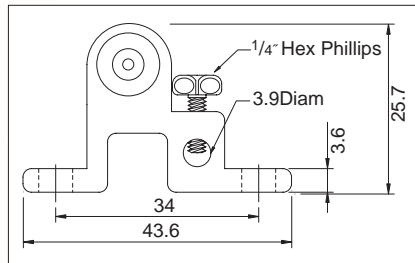
Order From:



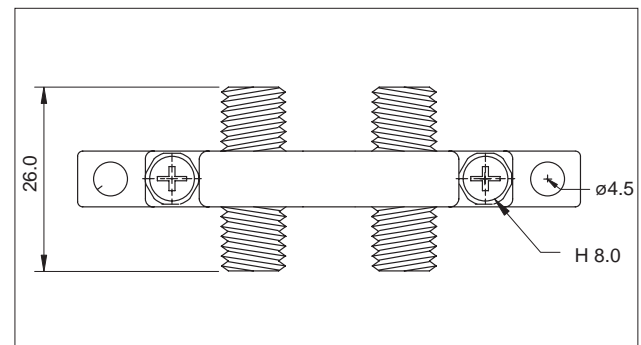
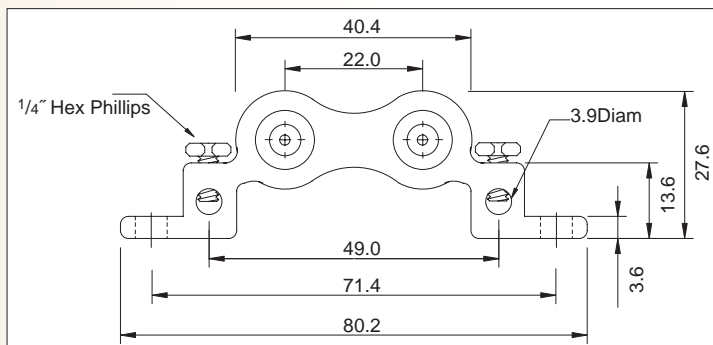
Toll Free: 800-423-2594
www.multicominc.com
multicom@multicominc.com

GRB-HRL Series

3GHz High Performance Grounding Blocks



GRB-1HRL



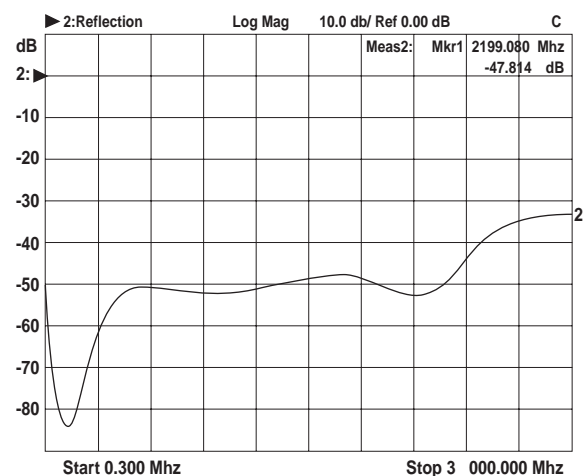
GRB-2HRL

Specifications

GRB-HRL Series

Female F Thread:	3/8"-32UNEF
Body Material:	CDA 360 Brass
Body Plating:	Nickel
Insulation Material:	Green Nylon
Contact Material:	Beryllium Copper
Contact Plating:	24k Gold
GRB Body Material:	Zinc
GRB Body Plating:	Blue Zinc
Screw Material:	Steel
Screw Plating:	Blue Zinc
Impedance:	75 ohms
Frequency Band:	0-3GHz
Return Loss:	>-30dB

RETURN LOSS Typical



Ordering Information

GRB-1HRL Single Path Ground Block

GRB-2HRL Dual Path Ground Block