

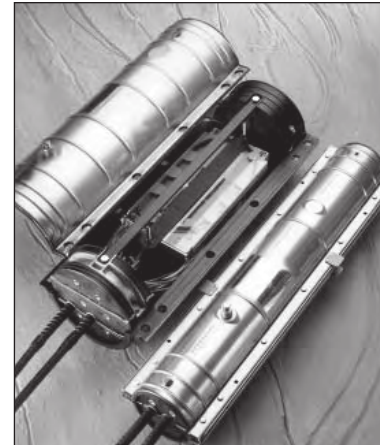


COYOTE[®] Splice Case

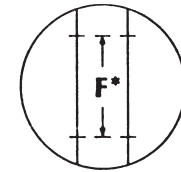
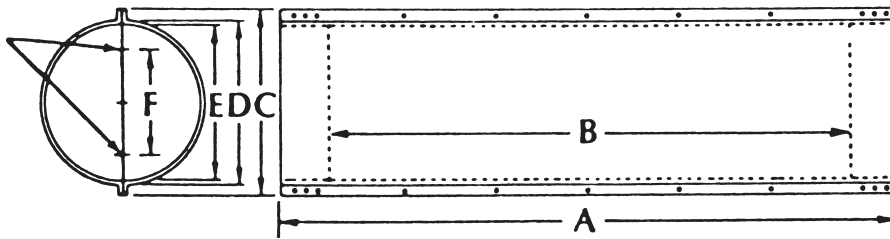
Value conscious and benefit-packed: The COYOTE Splice

The COYOTE Splice Case combines the field-proven performance of the PREFORMED™ Splice Case (stainless steel) with the high capacity and craft-friendly COYOTE Fiber Management System to create a feature-packed splice case for demanding applications.

The COYOTE Splice Case family is designed for all applications (aerial, underground, buried and vault) and for all fiber optic types (loose tube, unitube, ADSS and OPGW). With sizes ranging from 4" x 25" (102 x 635 mm) to 12.5" x 38" (318 x 965 mm) and splicing capacities ranging from 24 fibers to 1728 fibers, nearly any splicing network configuration can be accommodated.



Marks on End Plates denote usable area of cable entrance holes.



Three-Section End Plates

Dimensions (mm)						
Splice Case	A	B	C	D	E	F
4.0" x 25"	25.8" (655)	20.3" (516)	6.0" (152)	4.5" (114)	4.0" (102)	2.2" (56)
6.5" x 22"	22.0" (558)	16.2" (412)	9.25" (235)	7.0" (178)	6.5" (165)	4.1" (104)
6.5" x 28"	28.4" (721)	22.7" (577)	9.25" (235)	7.0" (178)	6.5" (165)	4.1" (104)
6.5" x 38"	38.4" (975)	32.7" (831)	9.25" (235)	7.0" (178)	6.5" (165)	4.1" (104)
8.0" x 28"	28.4" (721)	22.7" (567)	10.5" (267)	8.5" (216)	8.0" (203)	5.6" (142)
8.0" x 38"	38.4" (975)	32.7" (831)	10.5" (267)	8.5" (216)	8.0" (203)	5.6" (142)
9.5" x 28"	28.4" (721)	21.6" (549)	12.5" (318)	10.0" (254)	9.5" (241)	7.1" (180)
9.5" x 38"	38.4" (975)	31.6" (813)	12.5" (318)	10.0" (254)	9.5" (241)	7.1" (180)
9.5" x 45"	45.2" (1148)	38.6" (980)	12.5" (316)	10.0" (254)	9.5" (241)	7.1" (180)
12.5" x 28"	28.4" (721)	21.6" (549)	15.5" (394)	13.0" (330)	12.5" (318)	9.3" (236)
12.5" x 38"	38.4" (975)	31.6" (803)	15.5" (394)	13.0" (330)	12.5" (318)	9.3" (236)

COYOTE® Splice Case

COYOTE Splice Case Ordering Chart	
Catalog Number	Description (mm)
8006548	4"x 25"(102 x 635), for unitube applications, includes two (2) Two-Section End Plates, and one (1) Mainframe.
8006549	4"x 25"(102 x 635), DLX, for unitube applications, includes one (1) Two-Section End Plate with three grounding inserts, one (1) Two-Section End Plate, one (1) Mainframe, one (1) Transport Tube Kit, and three (3) "L" Brackets.
8006550	6.5"x 22"(165 x 559), for unitube applications, butt splice only, includes one (1) Two-Section End Plate, one (1) Three-Section End Plate, one (1) Transition Assembly, and one (1) Transport Tube Kit.
8006551	6.5"x 22"(165 x 559), DLX, for unitube applications, butt splice only, includes one (1) Two-Section End Plate, one (1) Three-Section End Plate with six grounding inserts, one (1) Transition Assembly, one (1) Transport Tube Kit, and four (4) "L" Brackets.
8006615	6.5"x 22"(165 x 559), for buffer tube applications, butt splice only, includes one (1) Two-Section End Plate, one (1) Three-Section End Plate, and one (1) Storage Assembly.
8006616	6.5"x 22"(165 x 559) DLX, for buffer tube applications, butt splice only, includes one (1) Two-Section End Plate, one (1) Three-Section End Plate with six grounding inserts, one (1) Storage Assembly, and four (4) "L" Brackets.
8006552	6.5"x 28"(165 x 711), for unitube applications, includes one (1) Two-Section End Plate, one (1) Three-Section End Plate, one (1) Transition Assembly, and one (1) Transport Tube Kit.
8006553	6.5"x 28"(165 x 711) DLX, for unitube applications, includes one (1) Two-Section End Plate, one (1) Three-Section End Plate with six grounding inserts, one (1) Transition Assembly, one (1) Transport Tube Kit, and four (4) "L" Brackets.
8006617	6.5"x 28"(165 x 711), for buffer tube applications, includes one (1) Two-Section End Plate, one (1) Three-Section End Plate, and one (1) Storage Assembly.
8006618	6.5"x 28"(165 x 711) DLX, for buffer tube applications, includes one (1) Two-Section End Plate, one (1) Three-Section End Plate with six grounding inserts, one (1) Storage Assembly, and four (4) "L" Brackets.
8006656	6.5"x 28"(165 x 711) DLX - Express version, for buffer tube applications, includes one (1) Two-Section End Plate, one (1) Three-Section End Plate with six grounding inserts, one (1) Storage Assembly, and four (4) "L" Brackets.
8006625	8"x 28"(203 x 711) DLX, for unitube applications, includes one (1) Two-Section End Plate, one (1) Three-Section End Plate with six grounding inserts, one (1) Transition Assembly, one (1) Transport Tube Kit, and four (4) "L" Brackets.
8006626	8"x 28"(203 x 711) DLX, for buffer tube applications, includes one (1) Two-Section End Plate, one (1) Three-Section End Plate with six grounding inserts, one (1) Storage Assembly, and four (4) "L" Brackets.
8006657	9.5"x 28"(241 x 711) DLX, for unitube applications, includes one (1) Two-Section End Plate, one (1) Three-Section End Plate with six grounding inserts, one (1) Transition Assembly, and one (1) Transport Tube Kit, and four (4) "L" Brackets.
8006627	9.5"x 28"(241 x 711) DLX, for buffer tube applications, includes one (1) Two-Section End Plate, one (1) Three-Section End Plate with six grounding inserts, one (1) Storage Assembly, and four (4) "L" Brackets.
8006755	9.5"x 38"(241 x 975) DLX, for unitube/buffer tube applications, includes one (1) Two-Section End Plate, one (1) Three-Section End Plate with six grounding inserts, one (1) Transition/Buffer Storage Assembly, and four (4) "L" Brackets.
8006628	9.5"x 45"(241 x 1143) DLX, for buffer tube applications, includes one (1) Two-Section End Plate, one (1) Three-Section End Plate with six grounding inserts, one (1) Dual Buffer Tube Storage Assembly, and four (4) "L" Brackets.
8006753	12.5"x 28"(318 x 711) DLX for buffer tube applications, includes one (1) assembled Three-Section End Plate, one (1) Three-Section End Plate with eight grounding inserts, one (1) Dual Tube Storage Assembly, and six (6) "L" Brackets.
8006752	12.5"x 28"(318 x 711) DLX for unitube applications, includes one (1) assembled Three-Section End Plate, one (1) Three-Section End Plate with eight grounding inserts, one (1) Dual Transition Assembly, one (1) Transport Tube Kit and six (6) "L" Brackets.
8006702	12.5"x 38"(318 x 975) DLX, for buffer tube applications, includes one (1) assembled Three-Section End Plate, one (1) Three-Section End Plate with eight grounding inserts, one (1) Dual Tube Storage Assembly, and six (6) "L" Brackets.
8006703	12.5"x 38"(318 x 975) DLX, for unitube applications, includes one (1) assembled Three-Section End Plate, one (1) Three-Section End Plate with eight grounding inserts, one (1) Dual Transition Assembly, one (1) Transport Tube Kit and six (6) "L" Brackets.