



Fiber Optic 4U Rack Mount Patch Panel

Description

Multicom’s fiber optic 4U rack mount patch panel is designed for space saving and high-density applications. The patch panel is made of 16 gauge cold rolled steel (CRS) with a black powder coated finish. Equipped with a removable back cover, mobile wire saddles, and extended front cable entrance, it allows a simplified front access, inside-panel manipulation and splices. Adapter strips up to 288 fibers, or cassettes can be installed into the 12 LGX cut-outs using their push pin mechanism.

Features and Benefits

- Compact design for space saving
- Mobile wire saddles
- Removable back cover
- Extended front cable entrance
- Enhanced panel depth to 17 inches
- Fits 12 LGX adapter strips and cassettes
- Fits 12 slim splice trays part number SPL-MSPL6 (not included). For technical reference, refer to Slim Fiber Optic Splice Tray - 12 Fiber (PDS-0126)
- Installation hardware and instructions manual included
- Compatible with 19” and 23” racks and cabinets

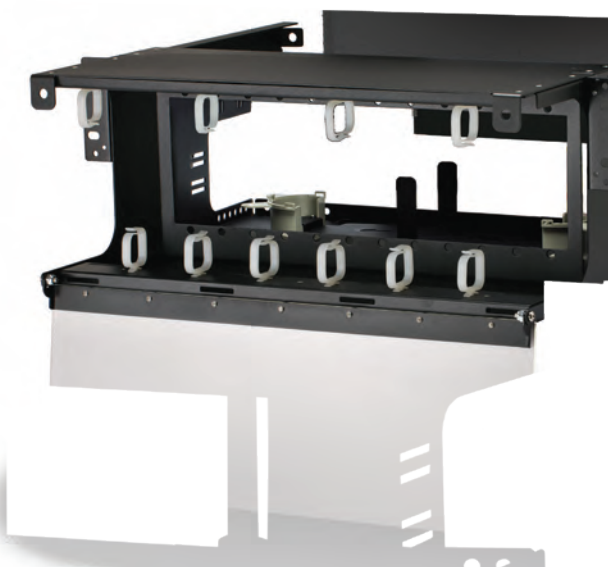
Applications

- Entrance facility
- Data center
- Telecommunications room
- Equipment room
- Consolidation point
- Central office
- Cellular tower base station
- Can fit up to 4 levels of management spools (Part number WW000066)

Certification and Compliance

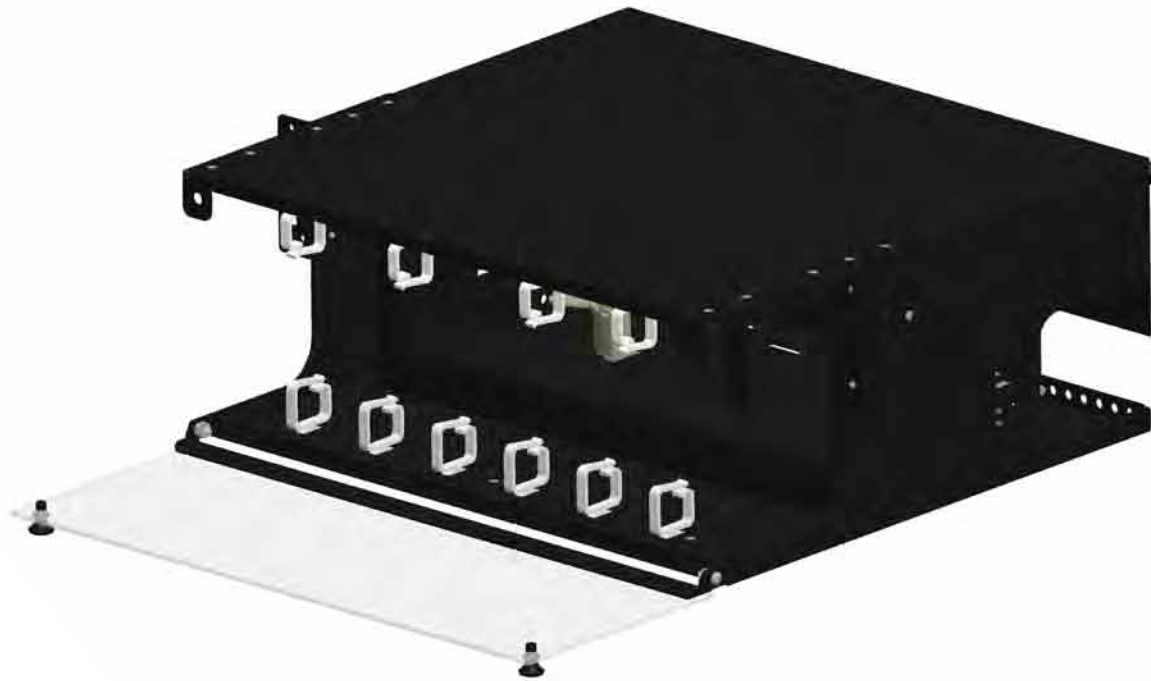
- TIA-569-B
- CEA/EIA-310-E
- ANSI/TIA/EIA-606-A
- GR-449-CORE
- UL 94
- RoHS
- Commercial Building Standard for Telecommunications Pathways and Spaces. Cabinets, Racks, Panels and Associated Equipment standard.
- Administration Standard for Telecommunications Infrastructure.
- Generic Requirements and Design Consideration for Fiber Distributing Frames.
- Tests for Flammability of Plastic Material for Parts in Devices and Appliances.
- Directive on Restriction of Hazardous Substances.

Purchase from:  www.multicominc.com 800-423-2594 407-331-7779



RoHS

Fiber Optic 4U Rack Mount Patch Panel



Ordering Information

Description	Part Number
Fiber optic 4U rack mount patch panel	MUL-FOCH-CASS

Packaging

Description
Cardboard box, 1 unit per box.

Inclusion

Description
2 four level management spools, 3 self-adhesive port ID labels, 2 warning labels, 6 Velcro 6-inch tie wraps, 8 nylon 4-inch tie wraps, 4 Philips screws 12-24/0.5-inch long, 4 Philips screws 10-32/0.5-inch long, 4 oval Philips screws M6-16 mm with plastic and metal washers, 4 cage nuts square style for M6 Philips screws.

Physical Characteristics

Parameter	Value
Fiber count capacity	288 fibers maximum
Plastic materials	UL 94V-0 thermoplastic
Panel material	16 Gauge cold rolled steel (CRS)
Panel finish	Black Sandex
Overall dimensions	431.8 mm (17 in) x 431.8 mm (17 in) x 177.3 mm (6.98 in)

Mechanical Characteristics

Parameter	Value
Installation temperature	-25° C (-13° F) ~ 40° C (104° F)
Storage temperature	-25° C (-13° F) ~ 55° C (131° F)
Relative humidity	≤ 85% (30° C)

Purchase from:  www.multicominc.com 800-423-2594 407-331-7779

RoHS