

PowerGoose II

Power & Climate Monitor



Rev 1.06

IT WatchDogs



Rack-mount power strip with environment and power monitoring. Expandable with external digital and analog sensors.

PowerGoose II combines power and environmental monitoring with a 10 outlet power strip. Built-in sensors include current, voltage, temperature, humidity, airflow, light level and sound level. Connect up to 16 remote sensors via digital sensor ports. Three analog inputs support external contact closure type sensors and those providing a 0 - 5VDC signal.

The PowerGoose II is available in 15 amp and 20 amp versions.

	PowerGoose II (15 Amp)	PowerGoose II (20 Amp)
Product Number	RSMRN102-101D15ST5	RSMRN102-102D20ST5

Power Strip

Outlet Quantity	10 receptacles	
Outlet Type	NEMA 5-15R	NEMA 5-20R
Outlet Style	duplex	
Max Outlet Voltage	120V	
Max Outlet Output	15A	20A

Outlets

15 Amp



NEMA
5-15R

20 Amp



NEMA
5-20R

Power Input

Voltage	120V	
Amperage	15A	20A
Frequency	50/60 Hz	
Power Cord	10'	
Power Plug	NEMA 5-15P	NEMA 5-20P

Indicators

Activity LED	1
Idle LED	1
Power LED	1

Product Details

Physical	19" rack-mount, 1-U space
Case	Heavy steel - black powder coat
Ethernet	10 Mbps, RJ-45 connector
Real Time Clock	RTC with power backup
Reset IP button	Restores factory defaults
Warranty	1 year (extended warranties available)

Power Plugs

15 Amp



NEMA
5-15P

20 Amp



NEMA
5-20P

PowerGoose II (15 Amp)	PowerGoose II (20 Amp)
-------------------------------	-------------------------------

Built-in Sensors

Temperature	-22 to 185 °F (-30 to 85 °C), +/- 0.5 °C	
Humidity	0 to 100%, +/- 5%	
Air Flow	0 to 99 (relative value)	
Light	ambient light level	
Sound	average sound level	
Volts RMS	80-280 VAC	
Amps RMS	0 - 15 Amps	0 - 20 Amps

Remote Sensor Support

Digital Sensor	4 ports (expandable to 16 with splitters, max cable: 600' total)
Analog Sensor	3 inputs (contact closure, 0 - 5 VDC)

Software Features

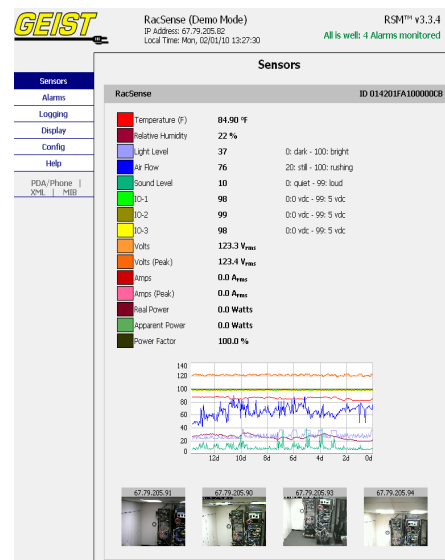
HTTP / HTTPS	web access
Alarms	high/low values, multiple thresholds per sensor
ESMTP / POP3	email alerts, ESMTP / POP3 auth
SNMP (v1, v2c, v3)	Gets, Trap and Clear alerts, MIB
Paging	email to pager proxy
XML	meta-tagged sensor values, alarms, config
Syslog	send debug messages to Syslog server
Access-control	3 access levels (view, control, admin)
Web Cams (optional)	Up to four can be displayed
WatchDog Console	compatible

Front



Back

The front of the PowerGoose II has ports for digital and analog sensors and the Ethernet jack. The power strip is accessed from the back of the unit.



A standard web browser is all that is required to access the PowerGoose II. This screenshot shows the Sensors page of the web interface.