



DESCRIPTION

Retrofit Kit for Reinforcement of Traffic Signalization - **FDOT Certification #65910202457013**

The device assembly is sold as a standard retrofit kit with available supplements, when required, at no additional cost. The kits are universal for the retrofitting of all current signal heads and disconnect hangers now listed on the F.D.O.T.'s Approved Products List.

The Signal Safe Retrofit Kit is comprised of five primary devices, engineered to work together to reduce or prevent the flexural failures now experienced with the currently installed dual span-wire system for traffic signals.

Installation does not require any removal or reconnection of electrical components.

Retrofit Use: The reinforcement of traffic signalization on span wire installations

Applicable Installations / Configurations:

- 3 section head signal assembly
- 5 section head signal assembly
- Multi-cluster signal assembly

Description of Main Components:

- Pivotal adjustable hanger assembly
- Disconnect reinforcement plates – top / bottom
- Signal head reinforcement plates – top / bottom
- Multi signal bracket reinforcement plate
- Tether Clamp Assembly
- Spacers – shims
- All required fasteners

Product Description: (Signal Safe Provides Support for Ordering)

- Kit Number 880-1, Primary Retrofit Kit –Large Disconnects - Cost Cast 1901/Engineered Castings
- Kit Number 880-2 Primary Retrofit Kit – Small Disconnects – Cost Cast 1900 / Pelco
- Kit Number 880-3 Supplement kit for 5 Section Assembly
- Kit Number 880-4 Supplement Bulk Kit for Multi-Signal Bracket Installations
- Kit Number 880-5 Supplement Bulk Kit for Cost Cast 1901 Disconnect Installations
- Kit Number 880-6 Supplement Bulk Kit for Spacer insert for Cost Cast 1900
- Kit Number 880-7 Supplement kit for SMS Disconnects
- Kit Number 880-8 Supplement for extended Jones Plug clearance - Pelco
- Kit Number 880-9 Supplement for extended Jones Plug clearance – Engineered Castings
- Kit Number 880-10 (Left Blank Intentionally)
- Kit Number 880-11 Installers Spare Parts
- Kit Number 880-12 Supplement for Cable or Drop Pipe Hanger Conversions

01/2013

PN 880-1

Primary Retrofit Kit - Large Disconnects

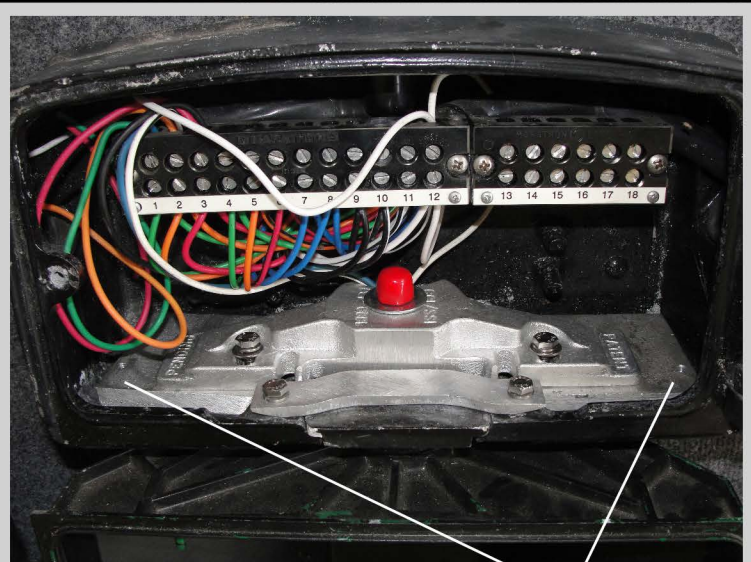
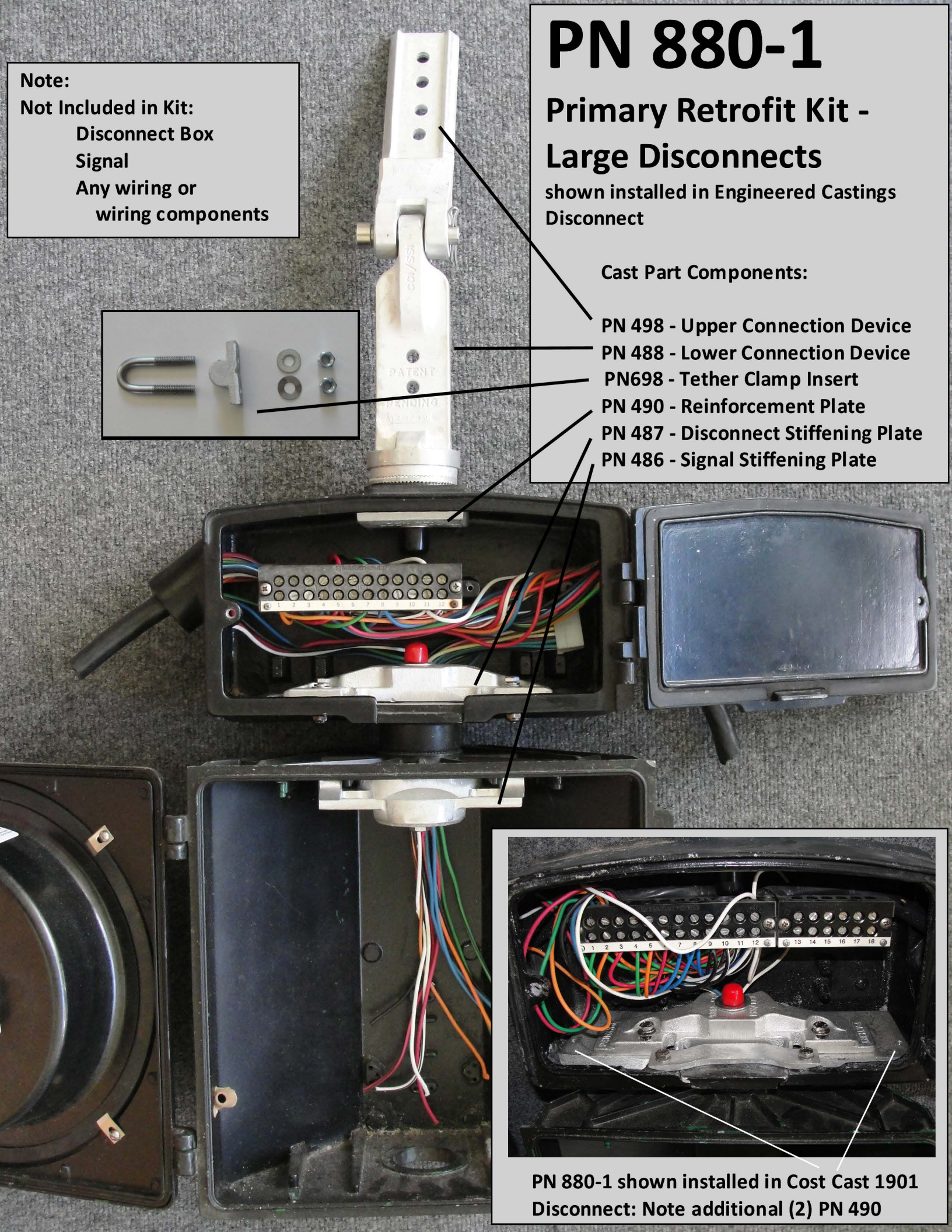
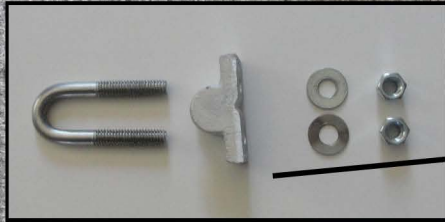
shown installed in Engineered Castings
Disconnect

Note:

Not Included in Kit:
Disconnect Box
Signal
Any wiring or
wiring components

Cast Part Components:

- PN 498 - Upper Connection Device
- PN 488 - Lower Connection Device
- PN698 - Tether Clamp Insert
- PN 490 - Reinforcement Plate
- PN 487 - Disconnect Stiffening Plate
- PN 486 - Signal Stiffening Plate



PN 880-1 shown installed in Cost Cast 1901
Disconnect: Note additional (2) PN 490

PN 880-2

Primary Retrofit Kit - Small Disconnects

shown installed in Cost Cast 1900
Disconnect

Cast Part Components:

- PN 498 - Upper Connection Device
- PN 488 - Lower Connection Device
- PN 698 - Tether Clamp Insert
- PN 490 - Reinforcement Plate
- PN 595 - Disconnect Stiffening Plate
- PN 486 - Signal Stiffening Plate

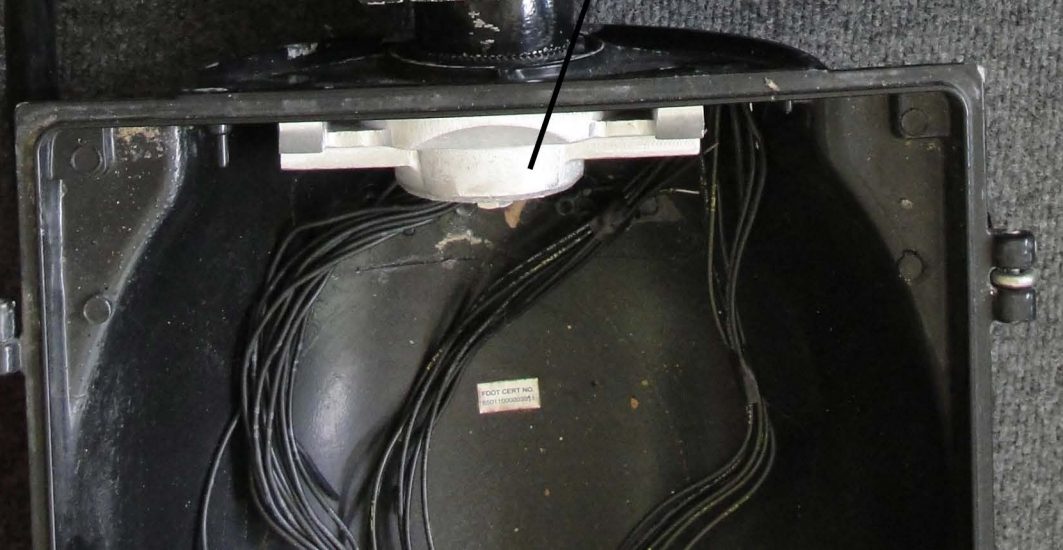
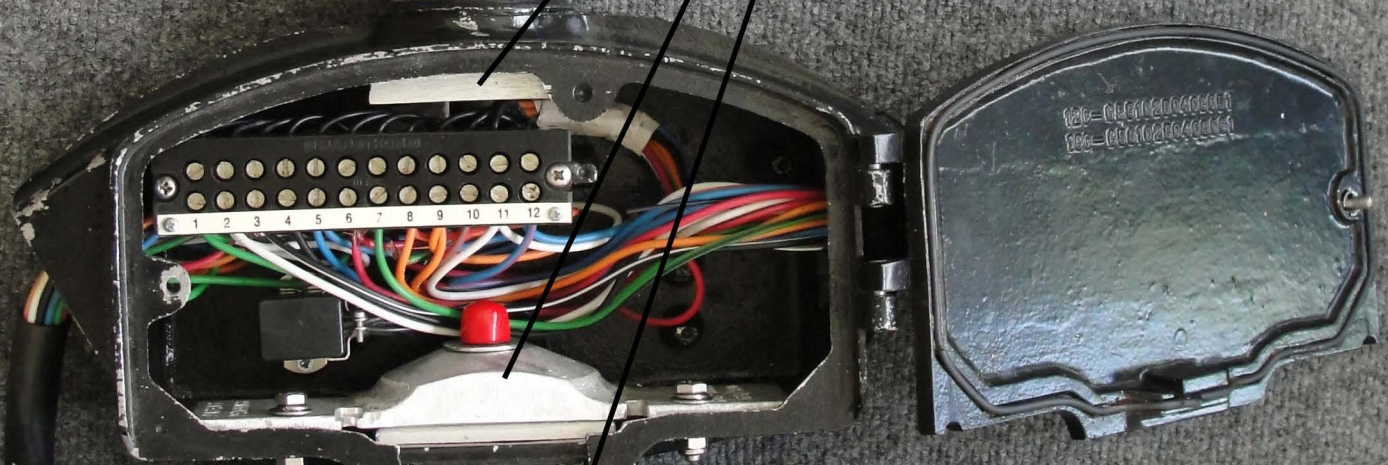
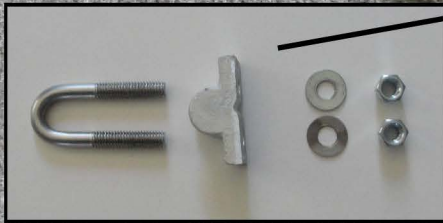
Note:

Not Included in Kit:

Disconnect Box

Signal

Any wiring or
wiring components



PN 880-3

Supplement Kit for 5 Section Assembly

shown installed in Cost Cast 1900
Disconnect

Cast Part Components:

PN 486 - Signal Stiffening Plate

PN 495 - Multi-Bracket Reinforcement

Note:

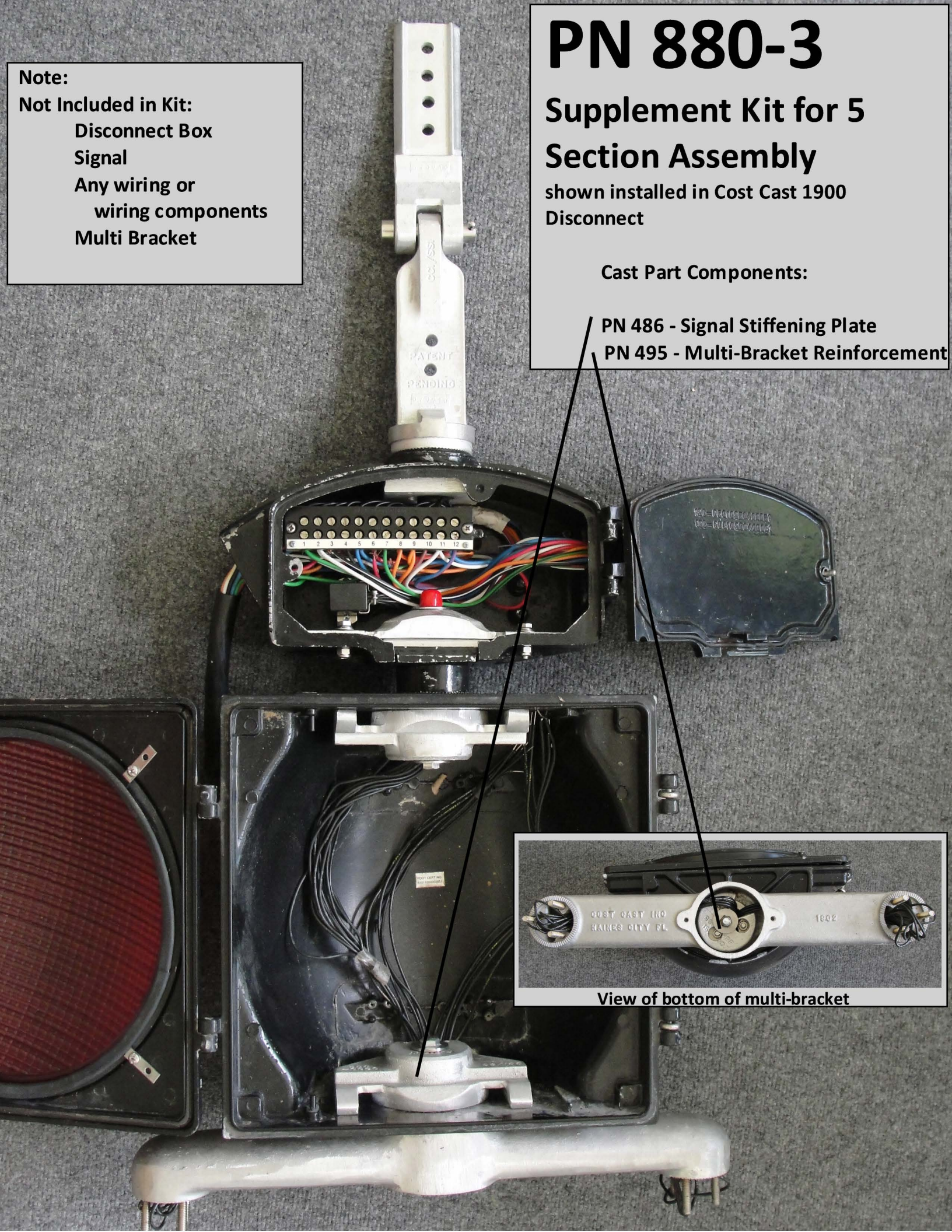
Not Included in Kit:

Disconnect Box

Signal

Any wiring or
wiring components

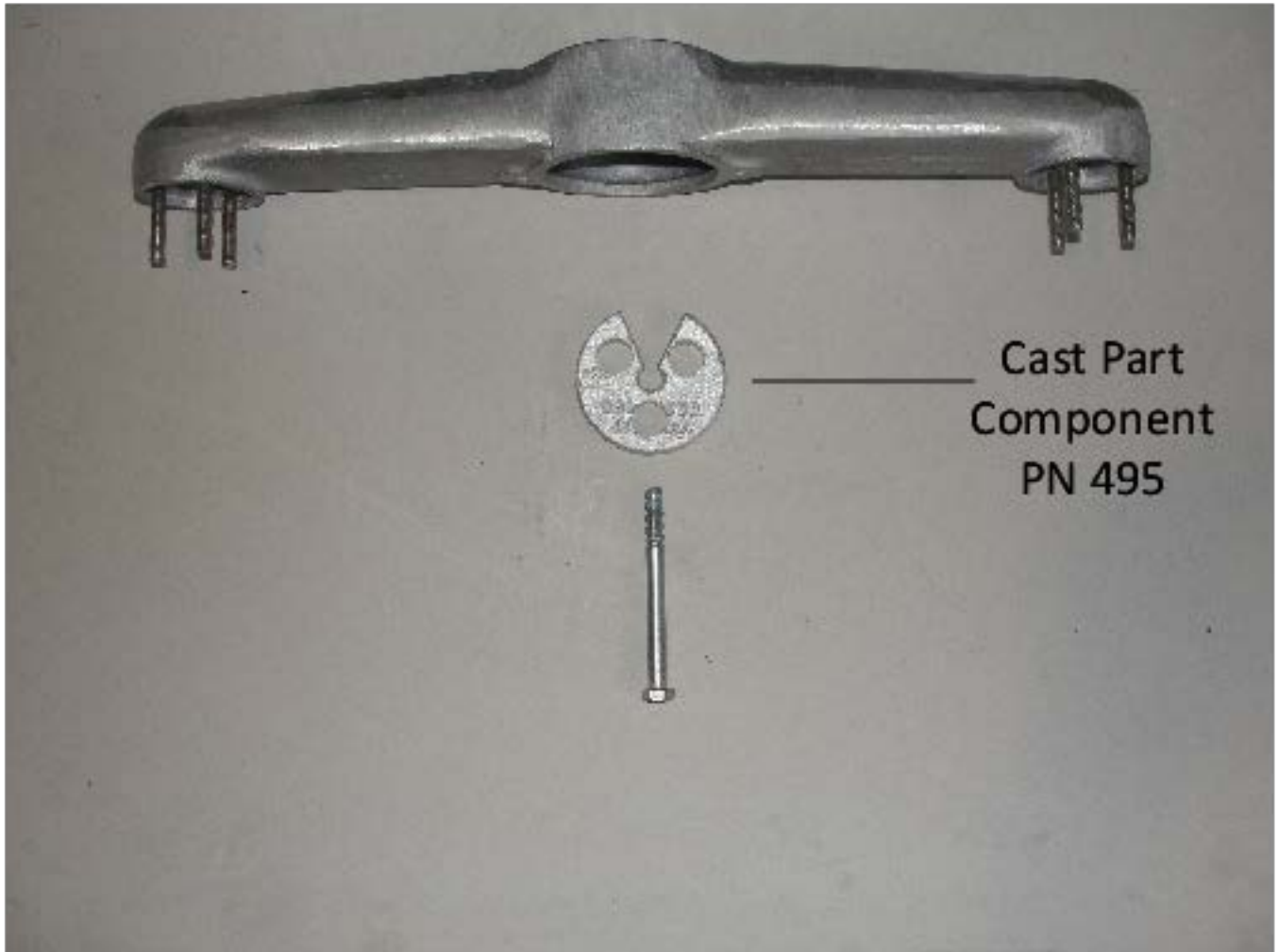
Multi Bracket



View of bottom of multi-bracket

Kit Number 880-4

Supplement Bulk Kit for Multi-Signal Bracket Installations



Kit Number 880-5

Supplement Bulk Kit for Cost Cast 1901 Disconnect Installations

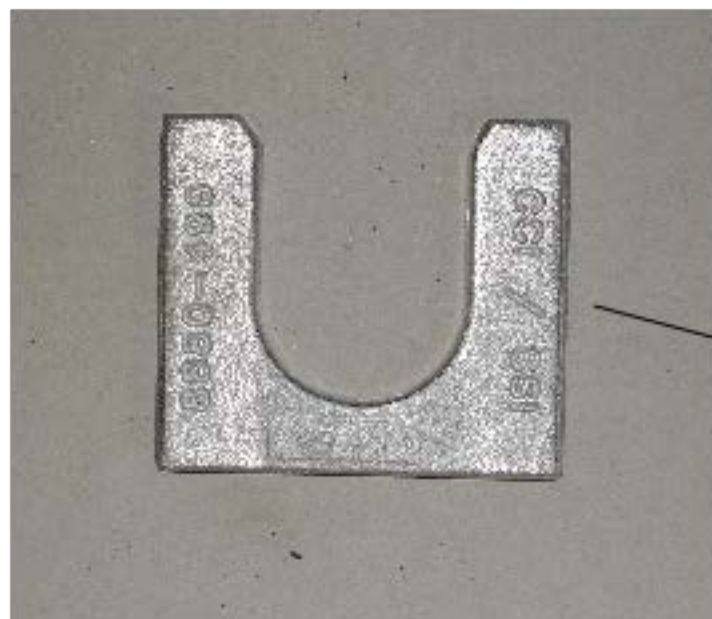
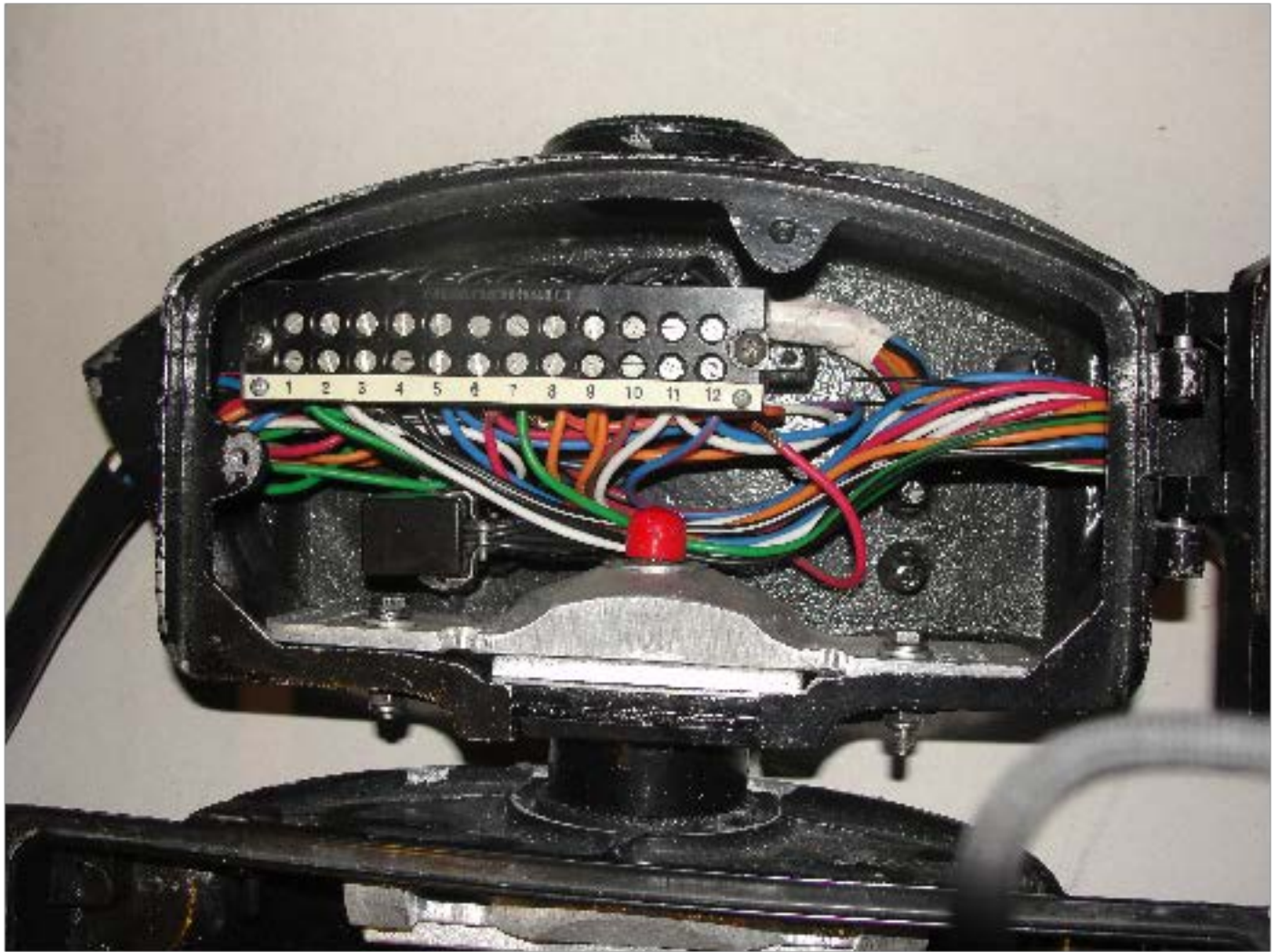
(PN #487 part of 880-1 kit, existing hold down bar used with new bolt-s, washers)



Cast Part
Components
PN 490-2

Kit number 880-6

Supplement Bulk Kit for Spacer Insert for Cost Cast 1900

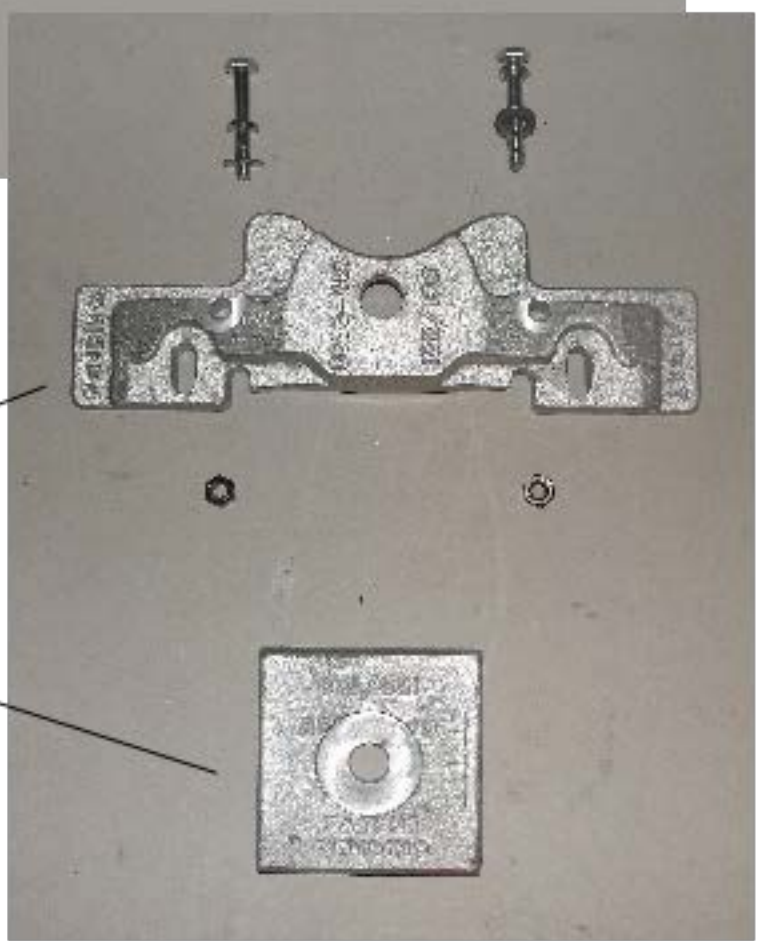


Cast Part
Component
PN 496

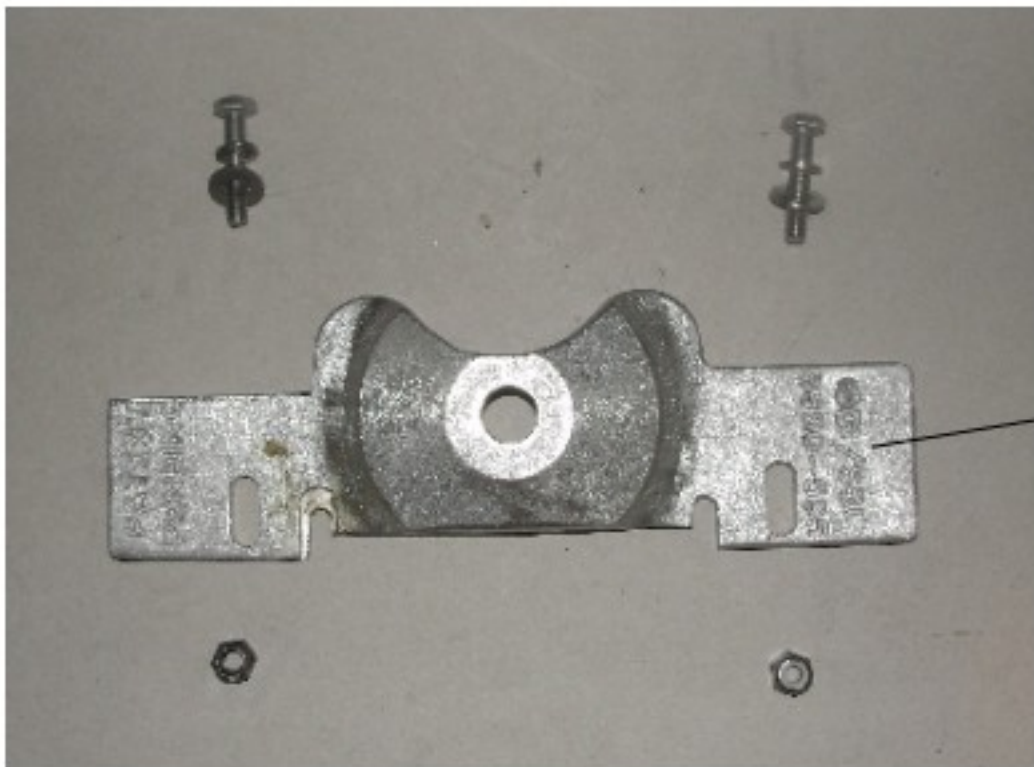
Kit Number 880-7
Supplement Kit for SMS Disconnects



Cast Part
Components
PN 695
(modified PN 487)
PN 696



Kit Number 880-8
Supplement for Extended Jones Plug Clearance - Pelco



**Cast Part
Component
PN 595 PEL**
(modified PN 595)

Kit number 880-9
Supplement for Extended Jones Plug Clearance -
Engineered Castings



**Cast Part
Component
PN 487 EC**
(modified PN 487)

Page Left Blank Intentionally

Kit Number 880-11

Installers Spare Parts



Kit Number 880-12

Supplement for Cable or Drop Pipe Hanger Conversions



Cast Part
Components
PN 1906 top

PN 1906E
6' Extension bar
(as needed)

