

Upper Arm Assy, 4-Way Tri-Stud 17" CTC, Alum

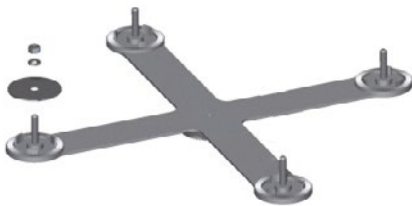
APL Certification #659-001-037

SP-1017-FL -

Coating

PNC=Process No Color

P__=Paint



Lower Arm Assy, 4-Way Tri-Stud 17" CTC, Alum

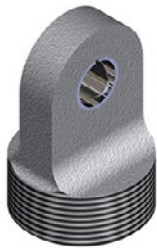
APL Certification #659-001-035

SP-1018-FL -

Coating

PNC=Process No Color

P__=Paint



Span Wire Adapter w/ Stainless Bushing, Alum

APL Certification #659-016-003

SE-0371 -

Coating

PNC=Process No Color

P__=Paint

Note: 1. All assemblies are supplied standard with stainless steel fasteners, slotted washers, and cables where applicable.
2. See page ii for available paint colors.