

Table of Contents

FLORIDA

Coatings..... ii
Conversion Charts.....iii
General Notes iv
Shipping Notice v

Product:

Astro-Brac..... 1-2
Free-Swinging 3-8
Side-of-Pole..... 9-10
Post Top 11
Sign Mounts..... 13-15
Push Buttons & Ped Signs..... 17-19
Traffic Accessories.....21

Notes: Materials, descriptions, and other specifications subject to change without notification.
As of the date on each page the assemblies shown were listed on the FDOT APL list which can be found at <https://fdotwp1.dot.state.fl.us/ApprovedProductList/Specifications>.

CODE	COATING
PNC	Process No Color
BOX	Black Oxide
BRS	Brass
CRM	Chrome
EC1	E-coat Black
GLV	Galvanized
ZN1	Zinc Bright
ZN2	Zinc Yellow
P_ _	Paint (add color #)

POWDER COAT STANDARD COLORS	
P29	Federal Yellow
P30	Automatic Green
P33	Gloss Black
P34	Flat Black
P36	New York State Green (forest)
P38	Louisiana Green
P39	Bronze

WET PAINT STANDARD COLORS	
P01	Federal Yellow
P02	Semi-Gloss Black
P03	Flat Black
P04	Gloss Black
P05	New York State Green (forest)
P06	Automatic Green (dark olive)
P16	Industrial Red Primer
P22	Gloss White (industrial enamel)

POWDER COAT SPECIAL COLORS (SUBJECT TO SPECIAL SETUP CHARGE)	
P28	Sun Gold (w/ clear top coat)
P32	Clear Coat
P35	Iron Gray
P40	Silver (w/ clear top coat)
P44	Antique Black Matte
P45	Super Wet White
P46	Brown Rust
P47	Brown Base
P48	Gray Primer (zinc rich)
P49	Cratered Pewter
P51	Cratered Bronze
P61	Blood Red
P62	MDC Gray
P63	Mocha Brown
P64	KOMO Bronze
P69	Brushing Brown
P71	Dark Green
P74	Bottle Green
P75	Fir Green
P76	Forest Green
P79	Dark Sepia Brown

Note:

Pelco can match your custom colors.

Please provide the following and contact Pelco for pricing.

- For custom powder: RAL number or paint chip.
- For wet paint: Federal Standard 595 paint code or paint chip.

Special setup and paint charge will apply.

Astro-Brac Band Length Standard, Stellar, Galaxy, *Tallon	
Band Length	Max Pole Diameter
29"	7.3"
36"	9.6"
42"	11.5"
48"	13.4"
56"	15.9"
72"	21.0"
84"	*24.8"
96"	*28.7"
114"	*34.4"

* Tallon maximum band length is 84" which fits a pole dia. of 22.0"

Astro-Brac Cable Length Standard, Stellar, Galaxy, *Tallon		
Cable Length	Max Pole Diameter	Pole Dia w/ Ty-back
62"	7.0"	4.5"
84"	10.5"	7.6"
96"	12.4"	9.6"
110"	14.6"	11.8"
120"	16.2"	13.4"
132"	18.2"	15.3"
144"	20.1"	17.2"
220"	*32.2"	*29.3"
280"	*35.0"	*35.0"

* Tallon maximum cable length is 220" which fits a pole dia. of 22.0"

Astro-Brac Band Length Mini-Brac, Triton	
Band Length	Max Pole Diameter
29"	7.3"
36"	9.6"
42"	11.5"
48"	13.4"
56"	15.9"
72"	21.0"
84"	22.0"

Astro-Brac Cable Length Mini-Brac, Triton	
Cable Length	Max Pole Diameter
45"	10.5"
62"	12.4"
84"	14.6"

Note:

Circumference to Diameter Conversion

Circumference ÷ pi = Diameter

Example: (12" ÷ 3.14) = 3.82"

TUBE LENGTH Standard & Tri-Bolt Signals	
23"	1-section 12"
37"	2-section 12" & 5-section cluster
46"	3-section 12"
58"	4-section 12"
74"	5-section 12"

TUBE LENGTH 1-1/2" NPS OPS Signals	
50"	3-section 12"
66"	4-section 12"
82"	5-section 12"



Astro-Brac Stellar Assy, 1-Way Stainless Cable Mount, Alum

APL Certification #659-031-011

SP-1006-FL - - -

Signal Section	Cable Length	Coating
1=1 Sec	See Note 2	PNC=Process No Color
2=2 Sec		P__=Paint
3=3 Sec		
4=4 Sec		
5=5 Sec		



Astro-Brac Stellar Assy, 5-Sec Cluster Stainless Cable Mount, Alum

APL Certification #659-031-012

SP-1008-FL - -

Cable Length	Coating
See Note 2	PNC=Process No Color
	P__=Paint



Astro-Brac Assy, 1-Way Articulating Serrated Stainless Cable Mount, Alum

APL Certification # 659-001-045

SP-1084-FL - - -

Signal Section	Cable Length	Coating
1=1 Sec	See Note 2	PNC=Process No Color
2=2 Sec		P__=Paint
3=3 Sec		
4=4 Sec		
5=5 Sec		



Astro-Brac Stellar Assy, 1-Way w/ Terminal Compartment Stainless Cable Mount, Alum

APL Certification #659-031-010

SP-1110-FL - - -

Signal Section	Cable Length	Coating
3=3 Sec	See Note 2	PNC=Process No Color
4=4 Sec		P__=Paint
5=5 Sec		



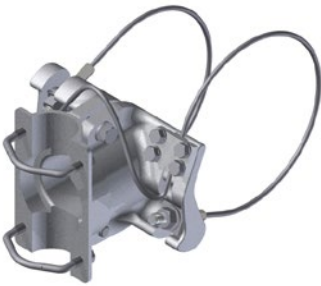
Note: 1. All assemblies are supplied standard with stainless steel fasteners, slotted washers, and cables where applicable.
 2. Cable Length: 62", 84", 96", 110", 120", 132", 144", 220", or 280". See page iii for pole diameters.
 3. See page ii for available paint colors.



Astro-Brac Clamp Kit, Horizontal Articulated Stainless Cable Mount, Alum

APL Certification #659-031-008

SP-1005-FL - -
 Cable Length Coating
 See Note 2 PNC=Process No Color
 P__=Paint



Astro-Brac Clamp Kit, Stellar Stainless Cable Mount, Alum

APL Certification #659-031-009

SP-1079-FL - -
 Cable Length Coating
 See Note 2 PNC=Process No Color
 P__=Paint



Astro Mini-Brac, 3/4"-14 NPT Stainless Cable Mount, Alum

APL Certification #659-038-001

SP-1113-FL - -
 Cable Length Coating
 See Note 3 PNC=Process No Color
 P__=Paint



Astro-Brac Arm Kit, Upper & Lower w/ Thru-Bolts For OPS Signals, Alum

APL Certification #659-001-044

SP-2016-FL -
 Coating
 PNC=Process No Color
 P__=Paint

Note: 1. All assemblies are supplied standard with stainless steel fasteners, slotted washers, and cables where applicable.
 2. Cable Length: 62", 84", 96", 110", 120", 132", 144", 220", or 280". See page iii for pole diameters.
 3. Cable Length: 45", 62", or 84". See page iii for pole diameters.
 4. See page ii for available paint colors.



Span Wire Hanger Assy, Adjustable w/ Tri-Stud Wire Outlet Body & Tether, Alum

APL Certification #659-037-002

SP-1083-FL -

Coating

PNC=Process No Color
P__=Paint



Span Wire Hanger Assy, Adjustable w/ Stabilizer Bar Tether, Alum

APL Certification #659-037-003

SP-1050-FL -

Coating

PNC=Process No Color
P__=Paint



Span Wire Hanger Assy, Adjustable w/ Tether, Alum

APL Certification #659-005-008

SP-1029-FL -

Coating

PNC=Process No Color
P__=Paint



Wire Hanger Assy, Adjustable w/ Tether, Alum

APL Certification #659-005-005

SE-5055 -

Coating

PNC=Process No Color
P__=Paint

Note: 1. All assemblies are supplied standard with stainless steel fasteners, slotted washers, and cables where applicable.
2. See page ii for available paint colors.

Free-Swinging



Span Wire Hanger Assy, Tri-Stud w/ Signal Closure Kit, Alum

APL Certification #659-037-001

SP-1082-FL -

Coating

PNC=Process No Color
P__=Paint



Span Wire Clamp, Alum w/ U-Bolts 3/4" Wide Slot

APL Certification #659-010-005

SE-0321-PNC

Note:

Stainless bushing and/or stainless upgrade available.

Specify by including -SB and/or -SS in the part number, i.e., SE-0321-SB-SS-PNC.



Span Wire Clamp, Alum w/ U-Bolts 1/2" Wide Slot

APL Certification #659-010-010

SE-3211-PNC

Note:

Stainless bushing and/or stainless upgrade available.

Specify by including -SB and/or -SS in the part number, i.e., SE-3011-SB-SS-PNC.



Span Wire Clamp, Iron w/ U-bolts 1/2" Wide Slot

APL Certification #659-010-006

SE-0338-GLV

Note:

Specify stainless upgrade by including -SS in the part number, i.e., SE-0338-SS-PNC.

Note: 1. All assemblies are supplied standard with stainless steel fasteners, slotted washers, and cables where applicable.
2. See page ii for available paint colors.

FLORIDA

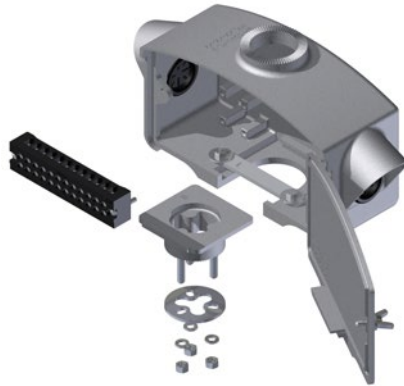
 PELCO PRODUCTS, INC.



**Disconnect Hanger Assy,
12 Circuit w/ 4' Harness &
2" Non-Threaded Top, Alum**

APL Certification #659-004-018

SP-1021-FL -1 - Coating
PNC=Process No Color
P__=Paint



**Disconnect Hanger Assy,
12 Circuit Terminal Block &
2" Non-Threaded Top, Alum**

APL Certification #659-004-018

SP-1021-FL -2 - Coating
PNC=Process No Color
P__=Paint



**Disconnect Hanger Assy,
18 Circuit w/ 4' Harness &
2" Non-Threaded Top, Alum**

APL Certification #659-004-019

SP-1022-FL - 1 Coating
PNC=Process No Color
P__=Paint



**Disconnect Hanger Assy,
18 Circuit w/ Terminal Block &
2" Non-Threaded Top, Alum**

APL Certification #659-004-019

SP-1022-FL - 2 Coating
PNC=Process No Color
P__=Paint

Note: 1. All assemblies are supplied standard with stainless steel fasteners, slotted washers, and cables where applicable.
2. See page ii for available paint colors.

Free-Swinging



Upper Arm Assy, 2-Way Tri-Stud 17" CTC, Alum

APL Certification #659-001-030

SP-1026-FL -

Coating

PNC=Process No Color
P__=Paint



Lower Arm Assy, 2-Way Tri-Stud 17" CTC, Alum

APL Certification #659-001-031

SP-1027-FL -

Coating

PNC=Process No Color
P__=Paint



Upper Arm Assy, 3-Way Tri-Stud Alum

APL Certification #659-001-036

SP-1015-FL -

Coating

PNC=Process No Color
P__=Paint



Lower Arm Assy, 3-Way Tri-Stud Alum

APL Certification #659-001-034

SP-1016-FL -

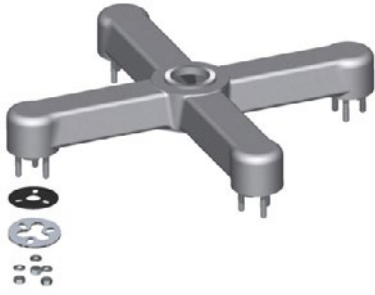
Coating

PNC=Process No Color
P__=Paint

Note: 1. All assemblies are supplied standard with stainless steel fasteners, slotted washers, and cables where applicable.
2. See page ii for available paint colors.

FLORIDA

pelco
PELCO PRODUCTS, INC.



Upper Arm Assy, 4-Way Tri-Stud 17" CTC, Alum

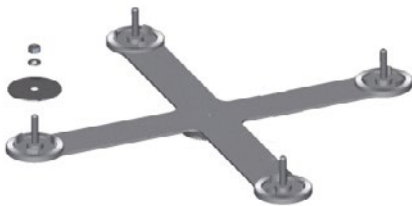
APL Certification #659-001-037

SP-1017-FL -

Coating

PNC=Process No Color

P__=Paint



Lower Arm Assy, 4-Way Tri-Stud 17" CTC, Alum

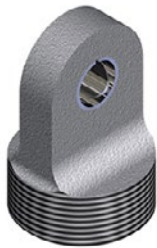
APL Certification #659-001-035

SP-1018-FL -

Coating

PNC=Process No Color

P__=Paint



Span Wire Adapter w/ Stainless Bushing, Alum

APL Certification #659-016-003

SE-0371 -

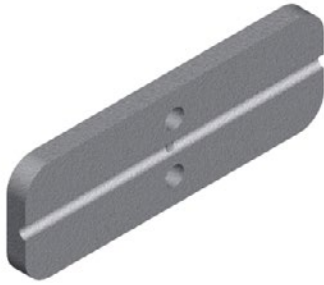
Coating

PNC=Process No Color

P__=Paint

Note: 1. All assemblies are supplied standard with stainless steel fasteners, slotted washers, and cables where applicable.
2. See page ii for available paint colors.

Free-Swinging



Stabilizer Bar, 2-Hole 2" x 6" Alum

APL Certification #659-020-002

SE-0536 -

Coating

PNC=Process No Color

P__=Paint



Stabilizer Block, 2-Hole 2" x 6" Alum

APL Certification #659-020-003

SE-0544 -

Coating

PNC=Process No Color

P__=Paint



Extender, 72" w/ Holes Alum

APL Certification #659-015-003

SE-0507 - 72-

Coating

PNC=Process No Color

P__=Paint

Note: 1. All assemblies are supplied standard with stainless steel fasteners, slotted washers, and cables where applicable.
2. See page ii for available paint colors.

FLORIDA

 PELCO PRODUCTS, INC.



Upper Arm Assy, 1-Way Tri-Stud, Alum

APL Certification #653-001-004

SP-1011-FL -

Coating

PNC=Process No Color

P_ =Paint



Lower Arm Assy, 1-Way Tri-Stud, Alum

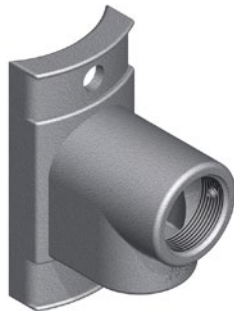
APL Certification #653-001-003

SP-1012-FL -

Coating

PNC=Process No Color

P_ =Paint



Hub Plate, Extended 1-1/2" NPS, Alum

APL Certification #653-006-005

SE-0381 - -

Mounting

Coating

0.75=3/4"
Mounting Hole

PNC=Process No Color
P_ =Paint



Hub Plate, Flat Back, 1-1/2" NPS, Alum

APL Certification #659-021-004

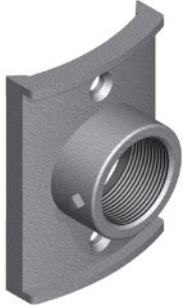
SE-0415 - -

Coating

DS=Double
Set Screws

PNC=Process No Color
P_ =Paint

Note: 1. All assemblies are supplied standard with stainless steel fasteners, slotted washers, and cables where applicable.
2. See page ii for available paint colors.



Hub Plate, Large Pole, 1-1/2" NPS, Alum

APL Certification #659-021-003

SE-0357 - -
 Set Screw Coating
 DS=Double PNC=Process No Color
 Set Screws P__=Paint



Hub Plate, Single, 1-1/2" NPS, Alum

APL Certification #653-006-004

SE-0111 - - -
 Mounting Set Screw Coating
 0.563=9/16" DS=Double PNC=Process No Color
 Mounting Hole Set Screws P__=Paint

Note: 1. All assemblies are supplied standard with stainless steel fasteners, slotted washers, and cables where applicable.
 2. See page ii for available paint colors.



Slip Fitter Assy, 1-Way Tri-Stud, Alum

APL Certification #659-009-013

SP-1034-FL - Coating
 PNC=Process No Color
 P__=Paint



Slip Fitter, 1-Way, Alum

APL Certification #659-009-012

SE-3106 - Coating
 PNC=Process No Color
 P__=Paint



Slip Fitter Assy, 1 & 2-Way, Alum

APL Certification #659-009-008

SE-3002 - Coating
 PNC=Process No Color
 P__=Paint



Mounting Kit for Concrete Pedestal, Alum

APL Certification #659-009-011

SP-1033-FL - Coating
 PNC=Process No Color
 P__=Paint

Note: 1. All assemblies are supplied standard with stainless steel fasteners, slotted washers, and cables where applicable.
 2. See page ii for available paint colors.

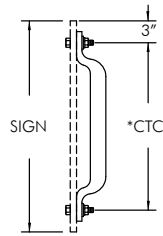
Astro Sign-Brac, Formed Tube Stellar Stainless Cable Mount, Alum

APL Certification #659-034-003



SP-1010-FL - - -

CTC Cable Length Coating
*See Chart See Note 2 PNC=Process No Color
P__=Paint



Sign Mount	
TUBE *CTC	SIGN
9"	15"
12"	18"
15"	21"
18"	24"
24"	30"
30"	36"
36"	42"
42"	48"
48"	54"
60"	66"
66"	72"
72"	78"

- Note: 1. All assemblies are supplied standard with stainless steel fasteners, slotted washers, and cables where applicable.
2. Cable Length: 62", 84", 96", 110", 120", 132", 144", 220", or 280". See page iii for pole diameters.
3. See page ii for available paint colors.

Sign Mounts



Sign Bracket, Free-Swinging Mast Arm Stainless Cable Mini-Brac Mount, Alum

APL Certification #659-011-031

SP-1072-FL - -
 Cable Length Coating
 See Note 2 PNC=Process No Color
 P__=Paint



Sign Bracket, Free-Swinging Mast Arm Large Hub Mount, Alum

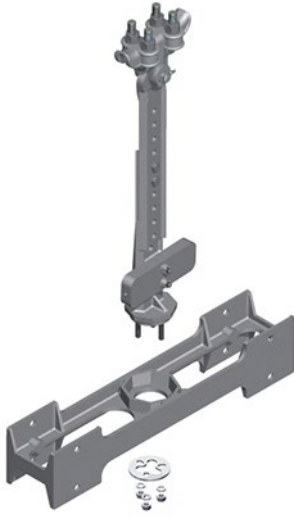
APL Certification #659-034-002

SP-1074-FL -
 Coating
 PNC=Process No Color
 P__=Paint

- Note: 1. All assemblies are supplied standard with stainless steel fasteners, slotted washers, and cables where applicable.
 2. Cable Length: 45", 62", or 84". See page iii for pole diameters.
 3. See page ii for available paint colors.

FLORIDA





Sign Hanger Assy, Adjustable Double 16" CTC w/ Iron Span Wire Clamp, Alum

APL Certification #659-011-020

SP-1031-FL -

Coating

PNC=Process No Color

P__=Paint



Sign Hanger Assy, Adjustable Single 16" CTC w/ Iron Span Wire Clamp, Alum

APL Certification #659-011-021

SP-1032-FL -

Coating

PNC=Process No Color

P__=Paint

Note: 1. All assemblies are supplied standard with stainless steel fasteners, slotted washers, and cables where applicable.
2. See page ii for available paint colors.

Push Buttons & Ped Signs

FLORIDA



Push Button Assy, Round Pole Mount w/ 2" Plunger

APL Certification #665-003-010

SP-1090-FL -

Coating

PNC=Process No Color

P__=Paint



Passport Piezo Push Button Assy, Round Pole Mount w/ 2" Plunger

APL Certification #665-003-015

SP-1111-FL -

Coating

PNC=Process No Color

P__=Paint

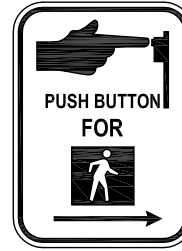
Note: 1. All assemblies are supplied standard with stainless steel fasteners, slotted washers, and cables where applicable.
2. See page ii for available paint colors.

Push Buttons & Ped Signs

Pedestrian Signs, MUTCD Compliant APL Certification #665-002-001



R10-2a



R10-3

SF-1085-

Size
12=9"x12"

 -

3/8" Mtg Holes
Blank=None
2H=2@10" CTC
4H=4@7"x10" CTC

 - PNC

SF-1014-

Size
7=5"x7-3/4"
12=9"x12"

 -

Arrow
R= Right Man/Arrow
L= Left Man/Arrow
D=Left Man/Double Arrow

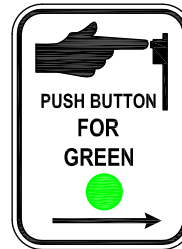
 -

3/8" Mtg Holes
Blank=None
2H=2@6.75 CTC
2@10" CTC
4H=4@4"x6.75"CTC
4@7"x10" CTC

 - PNC



R10-25



R10-4

SF-1083-

Size
7=5" x 7-3/4"
12=9" x 12"

 -

Arrow
R= Right Arrow
L= Left Arrow
D= Double Arrow

 -

3/8" Mtg Holes
Blank=None
2H=2@6.75 CTC
2@10" CTC
4H=4@4"x6.75"CTC
4@7"x10" CTC

 - PNC

SF-1022-

Size
12=9"x12"

 -

Arrow
R= RightArrow
L= Left Arrow
D= Double Arrow

 -

3/8" Mtg Holes
Blank=None
2H=2@10" CTC
4H=4@7"x10" CTC

 - PNC



R10-3a



R10-4a

SF-1006-

Size
12=9"x15"

 -

Arrow
R= Right Man/Arrow
L= Left Man/Arrow

 -

3/8" Mtg Holes
Blank=None
2H=2@13" CTC
4H=4@7"x13" CTC

 - PNC

SF-1027-

Size
12=9"x15"

 -

Arrow
R= Right Man/Arrow
L= Left Man/Arrow

 -

3/8" Mtg Holes
Blank=None
2H=2@13" CTC
4H=4@7"x13" CTC

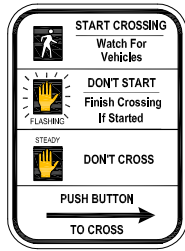
 - PNC

Note: 1. Standard signs are .063" aluminum with the exception of 9" x 15" signs, which are 0.080" thick. See options available below each sign.
2. FWHA in the 2009 MUTCD has made numerous changes in both the R numbers and their related sign designs. Therefore, careful review of the current sign design and it's R number should be made for every MUTCD compliant Pelco sign part number before ordering.

Push Buttons & Ped Signs

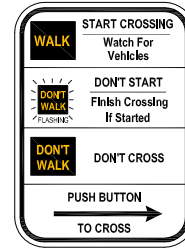
Pedestrian Signs, MUTCD Compliant APL Certification #665-002-001

FLORIDA



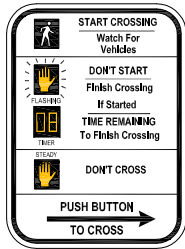
R10-3b

SF-1060- Size - Arrow - 3/8" Mtg Holes - PNC
 12=9"x12" R= Right Man/Arrow Blank=None
 L= Left Man/Arrow 2H=2@10" CTC
 4H=4@7"x10" CTC



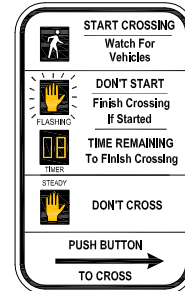
R10-3c

SF-1084- Size - Arrow - 3/8" Mtg Holes - PNC
 12=9"x12" R= Right Arrow Blank=None
 L= Left Arrow 2H=2@10" CTC
 4H=4@7"x10" CTC



R10-3e

SF-1065- Size - Arrow - 3/8" Mtg Holes - PNC
 7=5" x 7-3/4" R= Right Arrow Blank=None
 12=9" x 12" L= Left Arrow 2H=2@6.75 CTC
 D= Double Arrow 2@10" CTC
 4H=4@4"x6.75"CTC
 4@7"x10" CTC



R10-3e

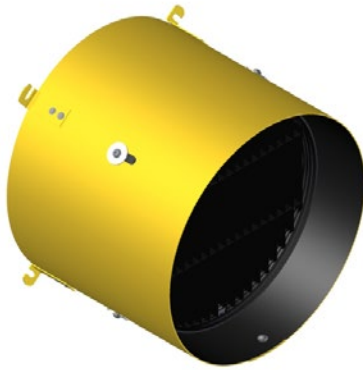
SF-1074- Size - Arrow - 3/8" Mtg Holes - PNC
 12=9"x15" R= Right Arrow Blank=None
 L= Left Arrow 2H=2@13" CTC
 D= Double Arrow 4H=4@7"x13" CTC



R10-3i

SF-1100- Size - Arrow - 3/8" Mtg Holes - Streetname - PNC
 15=9" x 15" R= Right Arrow Blank=None Specify
 L= Left Arrow 2H=2@13" CTC Street Name
 D= Double Arrow 4H=4@7"x13" CTC Required

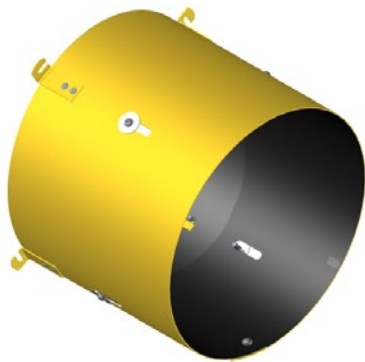
Note: 1. Standard signs are .063" aluminum with the exception of 9" x 15" signs, which are 0.080" thick. See options available below each sign.
 2. FWHA in the 2009 MUTCD has made numerous changes in both the R numbers and their related sign designs. Therefore, careful review of the current sign design and it's R number should be made for every MUTCD compliant Pelco sign part number before ordering.



**GPL, 7 Degree View Angle
Geometrically Programmed Louver,
12" w/ Visor w/ Universal Clips**

APL Certification #650-024-001

GL-1010 - 07 - UC - Coating
P_ =Paint



**Visor, Full Circle w/Slots for 12" Signal
w/ Universal Clips**

APL Certification #650-023-001

SM-1028-UC - Coating
P_ =Paint

Note: 1. All assemblies are supplied standard with stainless steel fasteners, slotted washers, and cables where applicable.
2. See page ii for available paint colors.