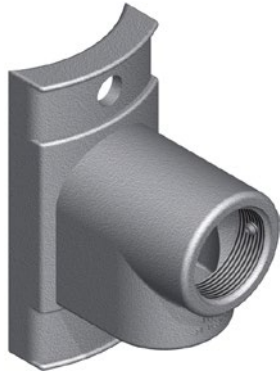


## Hubs & Mounting Brackets



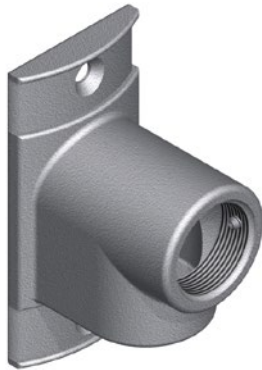
### Hub Plate, Extended, Alum 1-1/2" NPS

SE-0381 -  -   
 0.75=3/4" Mounting Hole      PNC=Process No Color  
    P\_\_=Paint



### Hub Plate, Extended, Alum 1-1/2" NPS w/ Downhole

SE-0382 -  -   
 0.75=3/4" Mounting Hole      PNC=Process No Color  
    P\_\_=Paint



### Hub Plate, Extended Flat Back, Alum 1-1/2" NPS

SE-0465 -  -   
 0.75=3/4" Mounting Hole      PNC=Process No Color  
    P\_\_=Paint



### Hub Plate, Extended Flat Back, Alum 1-1/2" NPS w/ Downhole

SE-0466 -  -   
 0.75=3/4" Mounting Hole      PNC=Process No Color  
    P\_\_=Paint

Note: 1. All assemblies are supplied standard with stainless steel fasteners.  
 2. See Reference Section for available paint colors.