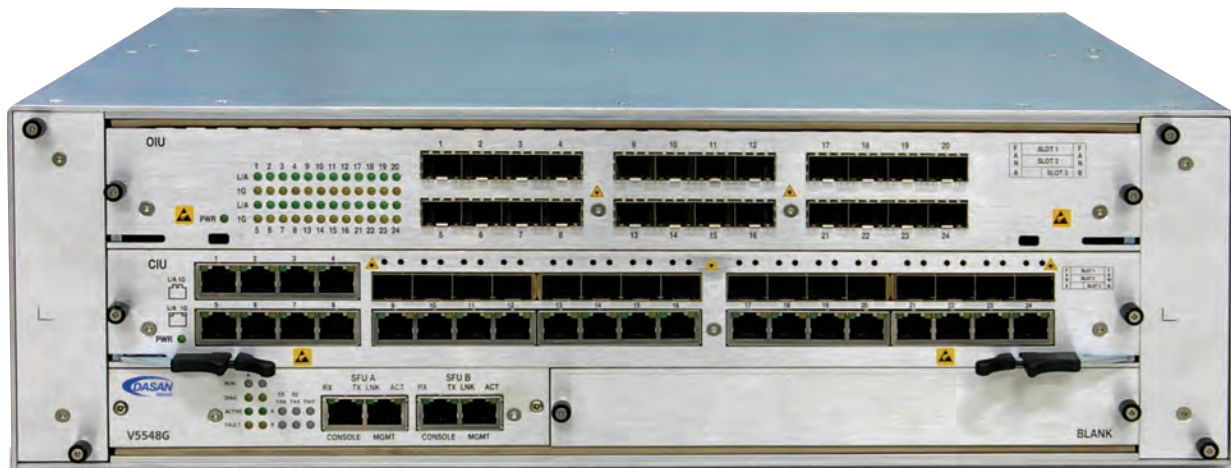


## L3 Gigabit Switch



Dasan Networks is a global leader in delivering carrier-grade network and customer access solutions that enable high-speed data, voice, video, and wireless services over existing and emerging FTTP (Fiber-to-the-Premise) networks and legacy copper networks.

Dasan's V5548G is a carrier-grade, Layer 3 Gigabit Ethernet (GbE) Switch with 48 GbE ports and two 10GbE uplink ports offering flexible configurations for a variety of environments. The V5548G enables standards-based fault tolerance, load balancing, and rapid recovery for medium to large mixed network deployments. Customers can deploy network-wide intelligent services, rate limiting, access control lists, multicast management, and high-performance IP routing - while maintaining the simplicity of traditional LAN switching. Dual switch fabric and power modules make the V5548G the most effective choice for supporting current and future configurations when traffic originates from a variety of sources. The V5548G provides traffic forwarding to core networks, ensuring equipment-level reliability. The management interface offers fine-tuning of features to enable high-bandwidth switching, filtering, and traffic management to prevent latency.

### Features

- Redundant fabric and power module architecture
- Wire-rate processing speeds
  - 176Gbps switching capacity
  - Up to 20Gbps uplink
- Advanced packet handling technology
- Spanning Tree: STP, RSTP, MSTP
- Static routing
- L2/L3/L4 traffic classification & priority management
- Advanced QoS features (SP/WRR/DRR)
- Multicast support for IP-TV / IGMP v2/v3
- IPv6 hardware readiness
- Reliable management security features
- SNMPv2/v3 with RMON, Alarming
- IEEE 802.1x RADIUS authentication

## Specifications

|  |   |
|--|---|
| Switching Capacity                       | 176Gbps   |
| Flash Memory                             | 40MB  |
| SDRAM                                    | 512MB   |
| 2 Slots for Service Interface Unit (SIU) | <ul style="list-style-type: none"> <li>• OIU: 24 100/1000Base-X ports (SFP)</li> <li>• CIU: 8 10/100/1000Base-T ports (RJ45) + Combo 16 10/100/1000Base-T ports (RJ45) or 100/1000Base-X ports (SFP)</li> </ul> |
| 1 Slot for Network Interface Unit (NIU)  | <ul style="list-style-type: none"> <li>• XIU: 2 10GBase-SR/LR/ER ports (XFP)</li> </ul>   |

|                        |  |
|------------------------|--|
| MGMT                   | 1 10/100Base-TX port (RJ45)                        |
| Console                | 1 Console port (RS232)                             |
| Power Voltage          | AC type: 100-240VAC, 50/60Hz<br>DC type: -48/60VDC |
| Operating Temp.        | 32 to 122°F (0 to 50°C)                            |
| Storage Temp.          | -40 to 158°F (-40 to 70°C)                         |
| Operating Humidity     | 0 to 90% (non-condensing)                          |
| Dimensions (W x H x D) | 17.3 x 5.2 x 13.2 in (440 x 132 x 335 mm)          |
| Regulatory Compliance  | CE (Class A), UL, FCC Part 15                      |

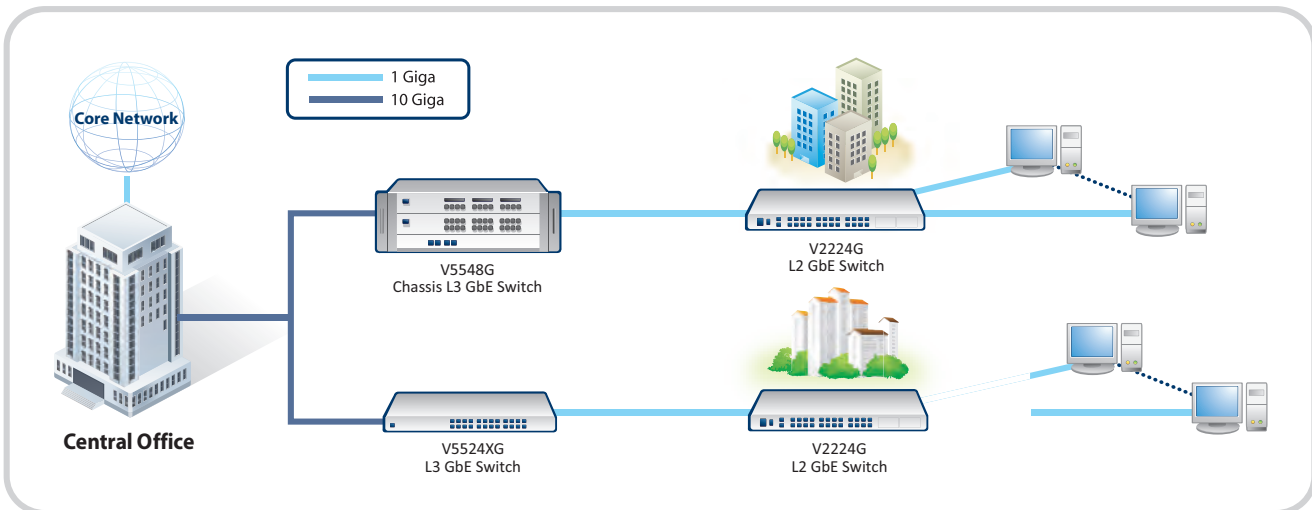
## Capabilities

|           |   |
|-----------|---|
| Layer 2   | <ul style="list-style-type: none"> <li>• 32K MAC address entries</li> <li>• 4K VLANs</li> <li>• Jumbo frame 9K</li> <li>• Standard Ethernet bridging</li> <li>• Port/Subnet/Protocol-based VLAN</li> <li>• VLAN stacking/translation</li> <li>• Spanning Tree: STP, RSTP, MSTP</li> <li>• 802.3ad Link Aggregation</li> <li>• Ethernet Ring Protection (ERP)</li> </ul> |
| Layer 3   | <ul style="list-style-type: none"> <li>• IPv4 / IPv6 routing</li> <li>• Static routing</li> <li>• RIPv1/v2, OSPFv2, BGPv4</li> <li>• Virtual Router Redundancy Protocol (VRRP)</li> </ul>   |
| Multicast | <ul style="list-style-type: none"> <li>• IGMPv1/v2/v3</li> <li>• IGMP snooping, IGMP static join</li> <li>• Multicast VLAN Registration (MVR)</li> <li>• PIM-SM/SSM</li> </ul>  |

|            |  |
|------------|--|
| QoS        | <ul style="list-style-type: none"> <li>• Egress shaping per port</li> <li>• QoS and Marking : SP, WRR, DRR</li> <li>• 8 queues per port</li> <li>• Conditional rate limiting</li> </ul>  |
| Security   | <ul style="list-style-type: none"> <li>• Secure Shell (SSH) v1/v2</li> <li>• RADIUS, TACACS+ authentication</li> <li>• Port/MAC/Ethernet type/L4-based ACL</li> <li>• Storm Control</li> <li>• DoS protection</li> </ul>   |
| Management | <ul style="list-style-type: none"> <li>• Out of band management</li> <li>• Serial / Telnet (CLI)</li> <li>• SNMP v1/v2/v3</li> <li>• DHCP server, client, relay agent with option82</li> <li>• Single IP management</li> <li>• IEEE 802.3ah EFM OAM</li> <li>• Remote Monitoring (RMON)</li> <li>• Syslog</li> </ul> |

## Sample Configuration

Ordering Information | Chassis Part #: DPW:G-S-5548G0-12



Purchase from Multicom www.multicominc.com | 800-423-2594

