

Know when water invades your equipment or server room

- Used to detect water leaks.
- Connects to the Goose via Analog Input or CCAT
- Receive alarms via email or SNMP

The water sensor allows the Goose climate monitor to detect leaks that could damage your equipment. The sensor measures conductivity and indicates whether the sensor is dry, damp, or completely immersed in water.

When water or other conductive liquid is present, a tiny electrical current flows between the metal contacts on the sensor. The more liquid the higher the current. A cable attached to the sensor allows the climate monitor to detect the presence and severity of a leak. Some example sources include:

- Plumbing fixtures
- Air-conditioner drip pans
- Condensation-outflow pipes
- Roof / ceiling leaks

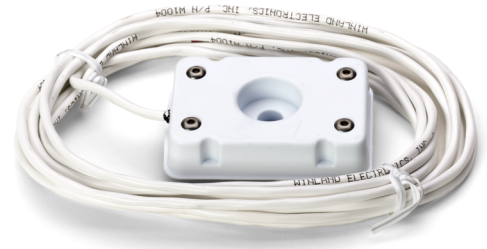
CONNECTING TO THE GOOSE

There are two options for connecting the water sensor to the Goose. Since the water sensor provides a 0-5VDC it can connect directly to an Analog Input. If other sensors occupy these inputs or the climate monitor doesn't have them, then you can use a CCAT interface to convert the sensor to digital.

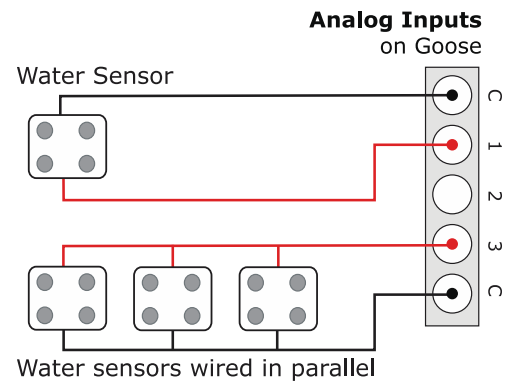
Multiple water sensors can be wired in parallel to a single Analog Input or CCAT. This is a good way to free up inputs for other types of sensors, but you won't know exactly which sensor detected the leak.

ALARMS

The web interface provided by the Goose climate monitor allows you configure alarms to notify you if a water is present. The notification is sent through email and/or SNMP trap. Some units can also trigger an alarm buzzer or energize an output relay.



A water sensor shown with the metal contact points facing up. When installed, these metal contacts must face down.



One or more water sensors can be connected to each Analog Input or CCAT interface. Wired in parallel, a leak is detected if any of the sensors becomes wet.

Sensor Details

Specifications

- Conductivity-based sensor (0-5VDC)
- Cable length: 15' or 100'
- Cable type: 2-conductor wire
- Warranty: 1 year (extended warranties available)

Compatibility

- Works with all climate/power monitors with analog ports
- Compatible with CCAT Analog-to-Digital Interface

Model Numbers

- WD-1 (15' cable), WD-100 (100' cable)

