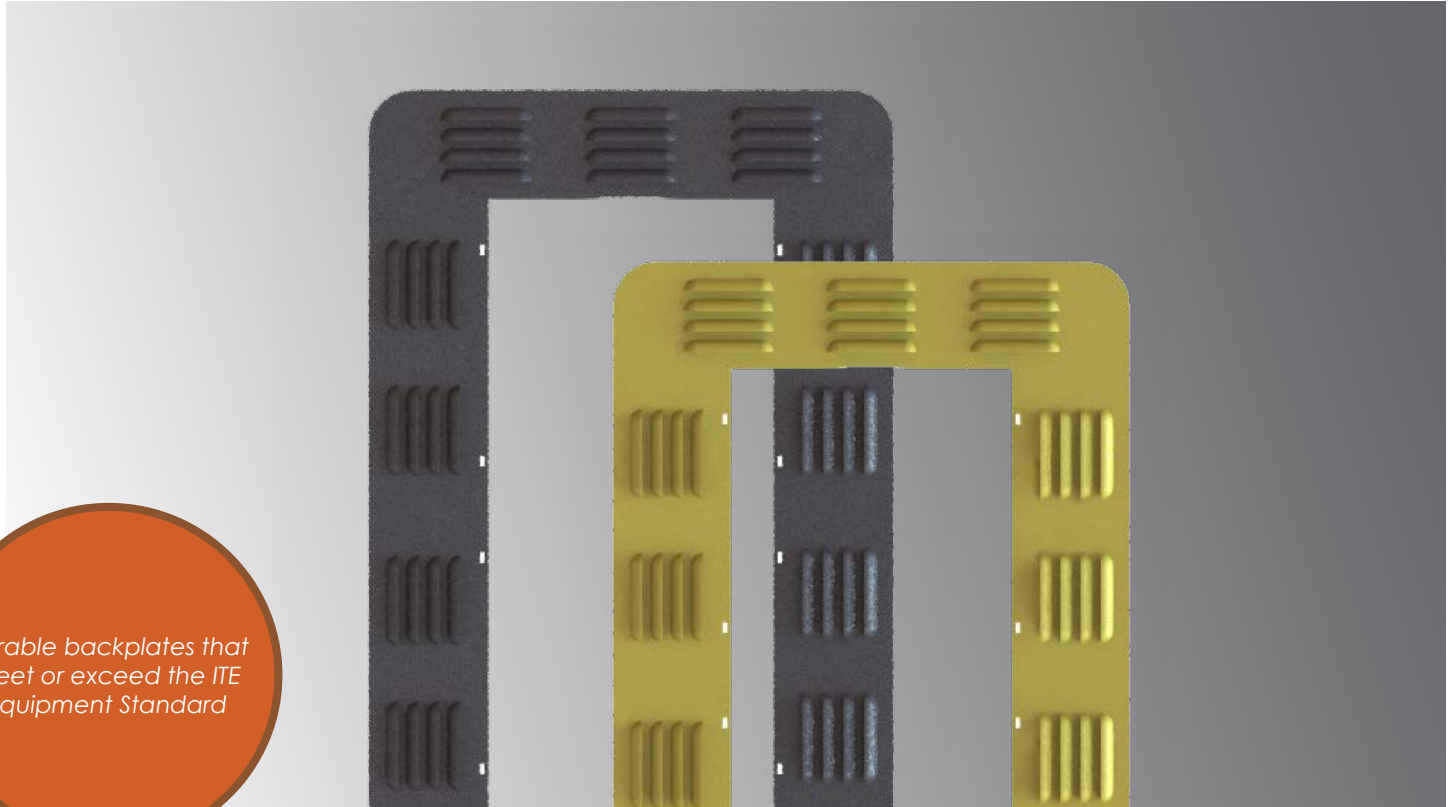


# Backplates



*Durable backplates that meet or exceed the ITE Equipment Standard*

## About Backplates

Traffic and pedestrian signals represent the foundation of safety at any signalized intersection. They also represent the first, and arguably the most important, interaction motorists, bicyclists and pedestrians have with Intelligent Transportation Systems (ITS).

For more than eight decades, Econolite has led the industry in both innovation and breadth of traffic and pedestrian signal solutions for virtually every application, helping transportation agencies and Metropolitan Planning Organizations (MPOs) efficiently and cost-effectively meet evolving traffic management programs.

Backplates provide improved visibility of the illuminated face of the signal by introducing a controlled-contrast background. Improved signal indication visibility will lead to increased safety performance at the intersection. Adding backplates have been shown to be a cost effective method to reducing right angle crashes associated with red-light running.

## At A Glance

- Aluminum or ABS material
- Available for both 8-inch and 12-inch signals
- 5-inch or 8-inch borders
- Louvers available on aluminum backplates
- Aluminum backplates painted with environmentally-safe, ultraviolet-resistant, polyester powder coating
- ABS backplates are molded flat black



<b>Backplates 12" Signal with 5" Border</b>	<b>One-Piece</b>		<b>Two-Piece</b>	
	Length (in)	Width (in)	Length (in)	Width (in)
Number of Signal Sections				
1	24.22	24.00	24.22	24.00
2	38.26	24.00	38.26	24.00
3	52.30	24.00	52.30	24.00
4	66.34	24.00	66.34	24.00
5	80.38	24.00	80.38	24.00
6	-	-	94.42	24.00

<b>Cluster Backplates 12" Signal with 5" Border</b>	<b>Two-Piece</b>	
	Length (in)	Width (in)
Number of Signal Sections		
5 (w/2.5 in filler plate)	50.98	37.00
5 (w/4.0 in filler plate)	52.48	37.00

All aluminum backplates are manufactured with 0.05 in. thick aluminum material

**Reflective Trim Tape**

1, 2, or 3 inch options

**Basic Specifications**

- Standard Colors:
  - Dark Olive Green (matches Federal Standard 595b-14056)
  - Yellow (matches Federal Standard 595b-13538)
  - Flat Black (matches Federal Standard 595b-37038)
  - Gloss Black (matches Federal Standard 595B-17038)



Purchase from:  [www.multicominc.com](http://www.multicominc.com) 800-423-2594 407-331-7779